

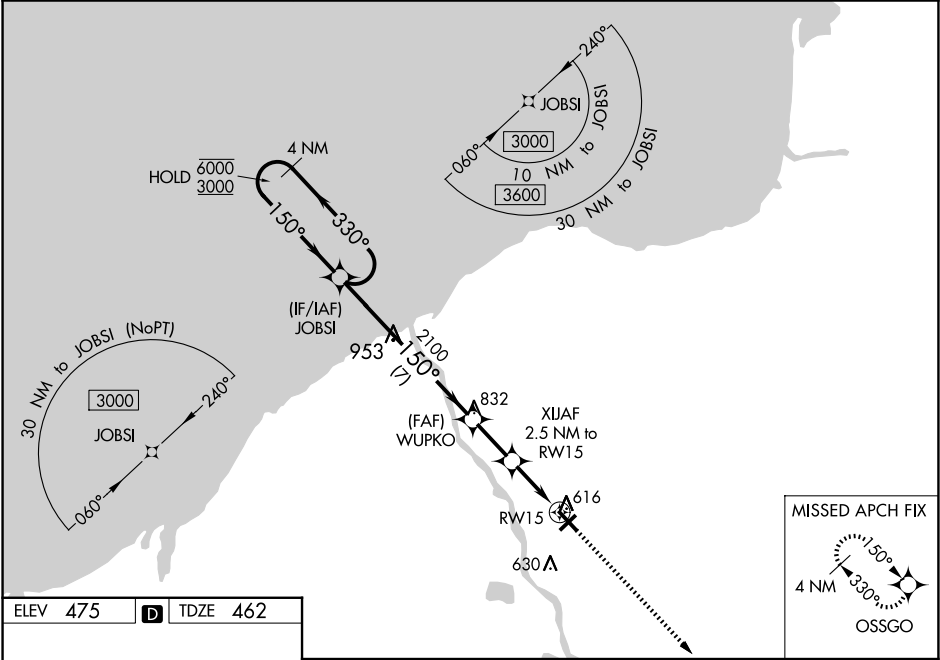
WAAS CH 72820 W15A	APP CRS 150°	Rwy Idg TDZE 462 Apt Elev 475
--	------------------------	---

RNAV (GPS) RWY 15

OSWEGO COUNTY (FZY)

RNP APCH.	MISSED APPROACH: Climb to 3000 direct OSSGO and hold.
<div><div>T</div><div>A</div></div> <div>Rwy 15 helicopter visibility reduction below $\frac{3}{4}$ SM NA. For uncompensated Baro-VNAV systems, LNAV/VNAV NA below -24°C or above 54°C.</div>	

ASOS 119.275	SYRACUSE APP CON 126.125 269.125	UNICOM 123.0 (CTAF) 0
------------------------	--	---------------------------------



4 NM Holding Pattern		JOBSI	WUPKO	XIJAF	2100	2.5 NM to RW15	3000	OSSGO
6000 ← 330° 3000 → 150°			150°		2100	*1.2 NM to RW15		*LNAV only.
GP 3.30° TCH 60								
		7 NM		2.1 NM	1.3 NM	1.2 NM		
CATEGORY	A	B	C	D				
LPV DA	783-1		321 (400-1)					NA
LNAV/ VNAV DA	887-1¼		425 (500-1¼)					NA
LNAV MDA	920-1	458 (500-1)	920-1⅜ 458 (500-1⅝)					NA
CIRCLING	920-1 445 (500-1)	940-1 465 (500-1)	960-1½ 485 (500-1½)					NA