

WAAS CH <b>56434</b> <b>W09A</b>	APP CRS <b>094°</b>	Rwy Idg TDZE Apt Elev	<b>4000</b> <b>1148</b> <b>1150</b>
--	------------------------	-----------------------------	---

RNAV (GPS) RWY 9

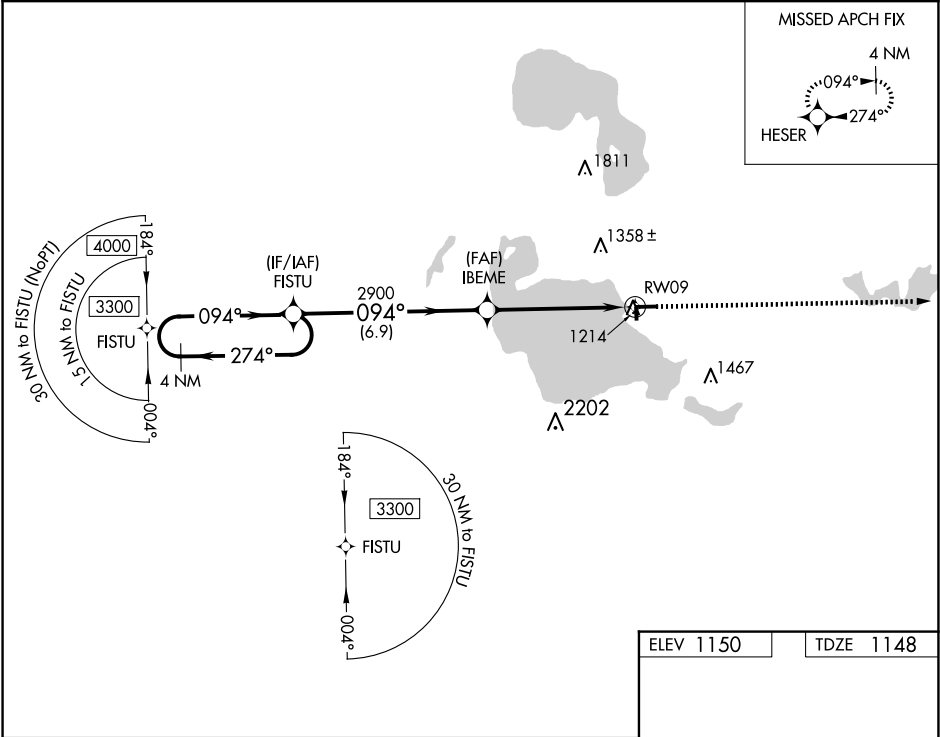
ROSCOMMON COUNTY/BLODGETT MEML (HTL)

⚠

When local altimeter setting not received, use Gaylord altimeter setting and increase all MDAs 120 feet and visibility Cat C/D ½ SM. DME/DME RNP-0.3 NA. Procedure NA at night. Helicopter visibility reduction below 1 SM NA. Circling NA to Rwy 18 and 36.

MISSED APPROACH:  
Climb to 3300 direct HESER and hold.

ASOS <b>118.05</b>	MINNEAPOLIS CENTER <b>125.475 269.45</b>	UNICOM <b>122.8 (CTAF) 0</b>
-----------------------	---	---------------------------------



4 NM Holding Pattern		Visual Segment - Obstacles		3300	HESER
3300		FISTU		IBEME	RW09
274°		094°		2900	
6.9 NM		5.4 NM			
CATEGORY	A	B	C	D	
LP MDA	1520-1		372 (400-1)		
LNAV MDA	1580-1	432 (500-1)	1580-1¼	432 (500-1¼)	
CIRCLING	1600-1	450 (500-1)	1700-1½ 550 (600-1½)	1820-2 670 (700-2)	

ELEV 1150

TDZE 1148

094°

81

4000 X 75

27

2200 X 100

36

HIRL Rwy 9-27 0

REIL Rws 9 and 27 0

EC-1, 07 AUG 2025 to 04 SEP 2025

EC-1, 07 AUG 2025 to 04 SEP 2025