

WAAS CH 42605 W05A	APP CRS 044°	Rwy Ldg 5370 TDZE 1275 Apt Elev 1277
--	------------------------	---

RNAV (GPS) RWY 5
LEE GILMER MEML (GVL)

RNP APCH - GPS.

T Circling to Rwy 11, 29 NA at night. For uncompensated Baro-VNAV systems, LNAV/VNAV NA below -6°C or above 54°C. For inop ALS, increase LNAV/VNAV all Cats visibility to 7/8 SM, increase LNAV Cats C and D visibility to 1 SM.

MALSR



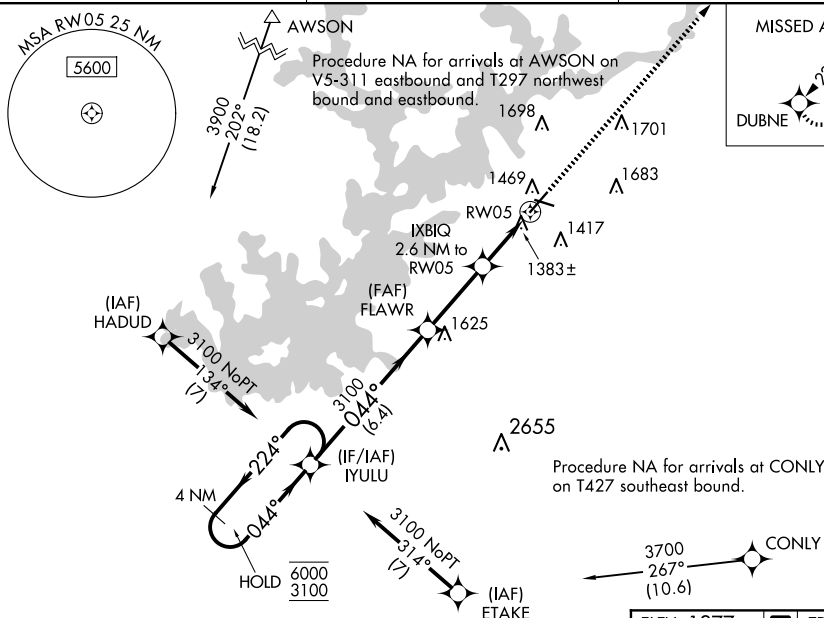
MISSED APPROACH:
Climb to 3500 direct
DUBNE and hold.

ASOS
126.475

ATLANTA APP CON★	
132.475	291.1

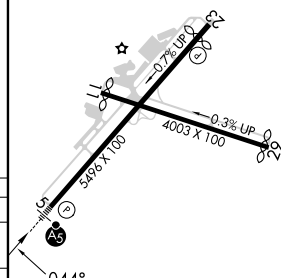
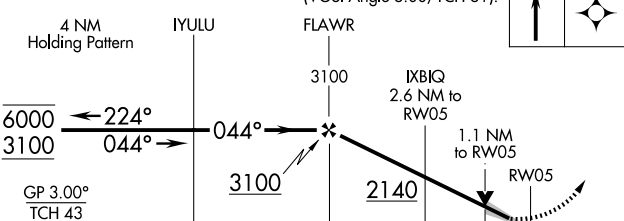
UNICOM
123.075 (CTAF) **L**

MISSED APCH FIX



ELEV 1277	D	TDZE 1275
-----------	----------	-----------

VGSI and RNAV glidepath not coincident (VGSI Angle 3.00/TCH 31).	3500	DUBNE
---	------	-------



CATEGORY	A	B	C	D
LPV DA	1475-1/2 200 (200-1/2)			
LNAV/VNAV DA	1551-1/2 276 (300-1/2)			
LNAV MDA	1640-1/2	365 (400-1/2)	1640-5/8	365 (400-5/8)
CIRCLING	1780-1 503 (600-1)	2000-1 723 (800-1)	2000-2 723 (800-2)	2020-2 1/2 743 (800-2 1/2)

HIRL Rwy 5-23 **L**