

LOC/DME I-GVL 110.55 Chan 42 (Y)	APP CRS 044°	Rwy Ldg TDZE 1275 Apt Elev 1277	ILS or LOC RWY 5 LEE GILMER MEML (GVL)
--	------------------------	---	--

DME required.
RADAR required for procedure entry.

⚠

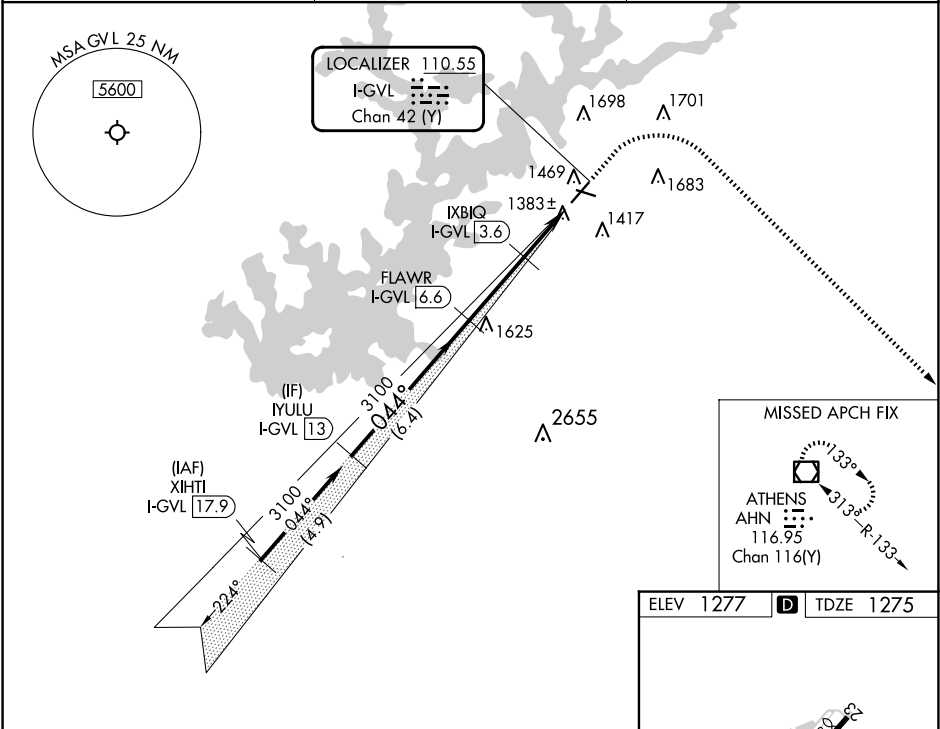
Circling Rwy 11, 29 NA at night.
For inop ALS increase S-LOC 5 Cats C and D visibility to 1 SM.

MALSR

⚠

MISSED APPROACH: Climb to 2000 then climbing right turn to 3100 direct AHN VOR/DME and hold.

ASOS 126.475	ATLANTA APP CON★ 132.475 291.1	UNICOM 123.075 (CTAF) 1
------------------------	--	--



VGSI and ILS glidepath not coincident (VGSI Angle 3.00/TCH 31).				2000		3100	AHN	
				↑		↪	⊠	
CATEGORY				A		B	C	D
S-ILS 5				1475-½		200 (200-½)		
S-LOC 5				1640-½		365 (400-½)		1640-⅝ 365 (400-⅝)
CIRCLING				1780-1 503 (600-1)		2000-1 723 (800-1)		2000-2 723 (800-2) 2020-2½ 743 (800-2½)
				FAF to MAP 5.6 NM				
				Knots 60 90 120 150 180				
				Min:Sec 5:36 3:44 2:48 2:14 1:52				