


VOR/DME SHB	APP CRS	Rwy Idg	5000
116.15	156°	TDZE	803
Chan 108 (Y)		Apt Elev	803

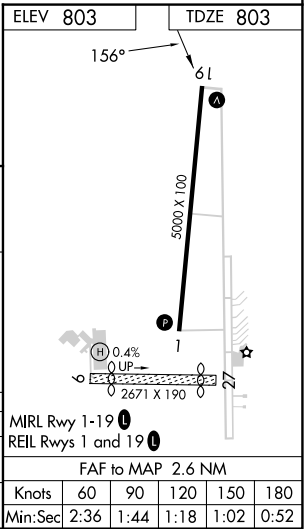
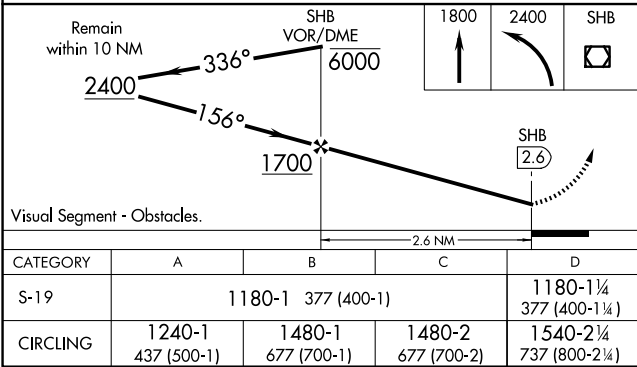
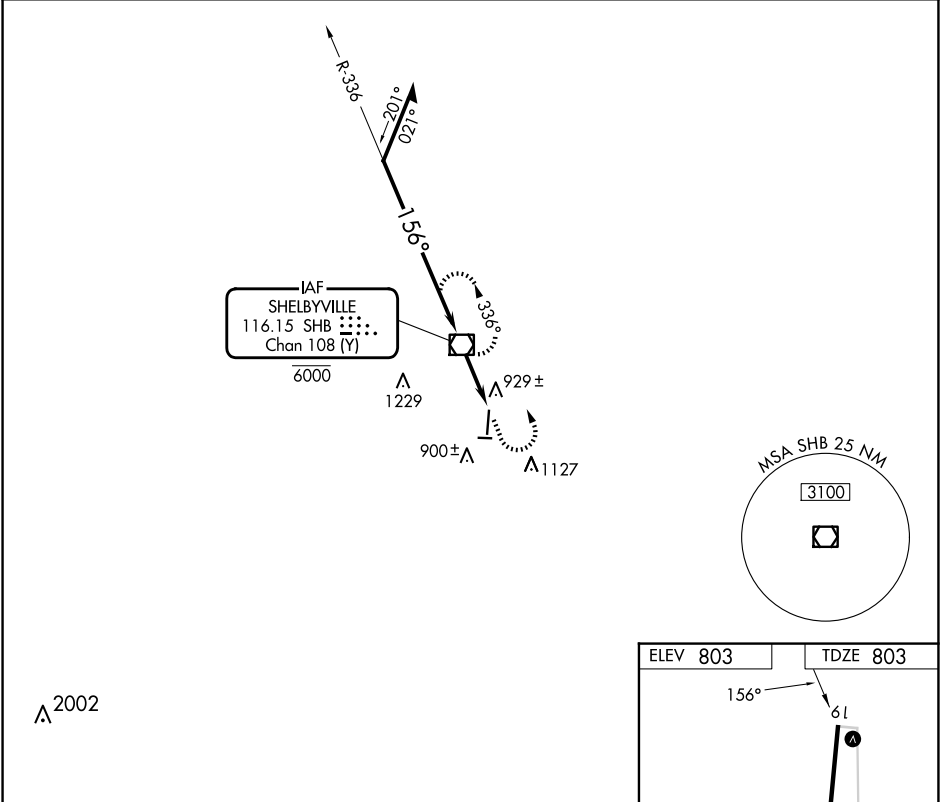
VOR RWY 19
SHELBYVILLE MUNI (GEZ)



Circling Rwy 9, 27 NA at night.

MISSED APPROACH: Climb to 1800 then climbing left turn to 2400 direct SHB VOR/DME and hold.

ASOS 121.55	INDIANAPOLIS APP CON 127.15 317.8	UNICOM 122.8 (CTAF) 
----------------	--------------------------------------	--



EC-2, 07 AUG 2025 to 04 SEP 2025

EC-2, 07 AUG 2025 to 04 SEP 2025