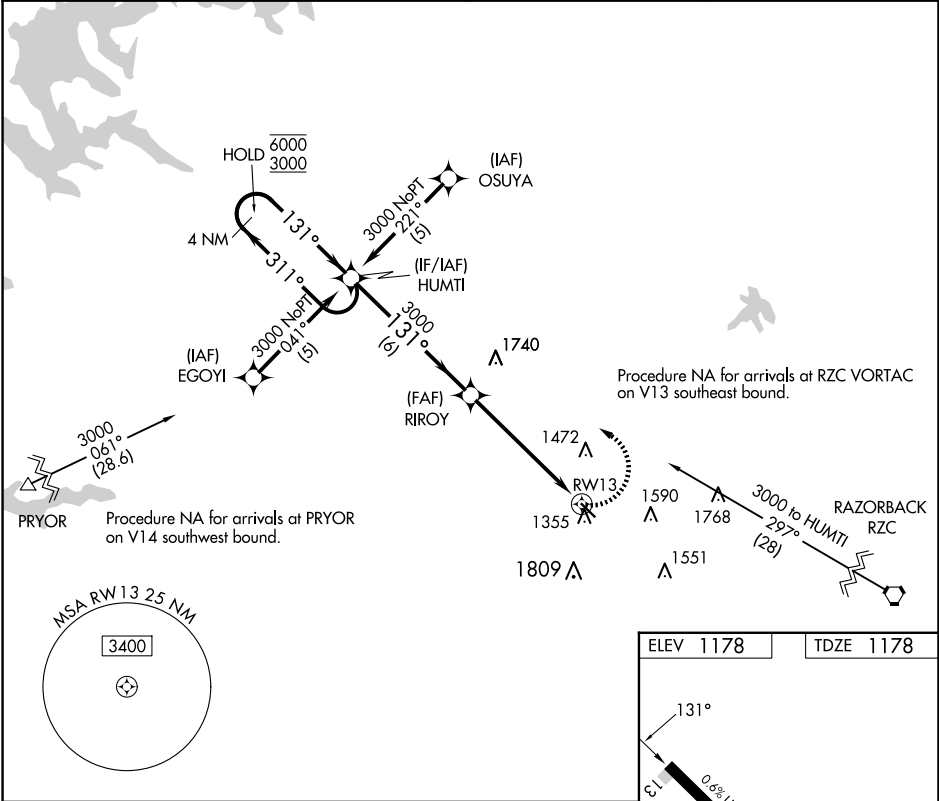


APP CRS	Rwy Ldg	3863
131°	TDZE	1178
	Apt Elev	1178

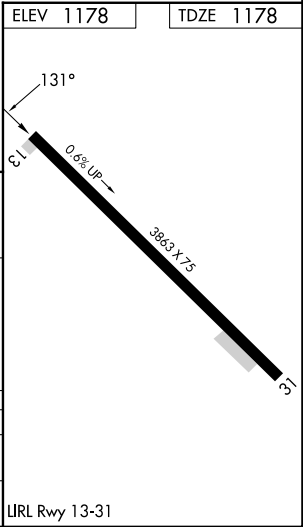
RNAV (GPS) RWY 13

CRYSTAL LAKE (5M5)

RNP APCH - GPS.		MISSED APPROACH: Climbing left turn to 3000 direct HUMTI and hold.	
NA Procedure NA at night. Rwy 13 helicopter visibility reduction below 1 SM NA. Use Northwest Arkansas Ntl altimeter setting; if not received, use Joplin Rgnl altimeter setting and increase all MDAs 120 feet and LNAV Cat C and Circling Cat B visibility ¼ SM and Circling Cat C visibility ½ SM. Circling NA for Cat C southwest of Rwy 13-31.			
XNA ASOS	RAZORBACK APP CON ★	CLNC DEL	UNICOM
119.425	121.0 244.575	126.6	122.8 (CTAF)



4 NM Holding Pattern				
HUMTI RIROY				
6000 3000 ← 311° 131° → 3000				
3.05° TCH 40 RWY 13				
6 NM 5.6 NM				
CATEGORY	A	B	C	D
LNAV MDA	1720-1	542 (600-1)	1720-1 5/8 542 (600-1 5/8)	NA
CIRCLING	1820-1 642 (700-1)	1900-1 722 (800-1)	1940-2 1/4 762 (800-2 1/4)	NA



SC-1, 07 AUG 2025 to 04 SEP 2025

SC-1, 07 AUG 2025 to 04 SEP 2025