

WAAS CH 62824 W28A	APP CRS 282°	Rwy Idg 5060 TDZE 969 Apt Elev 974
--	------------------------	---

RNAV (GPS) RWY 28

POLK COUNTY/CORNELIUS MOORE FLD (4A4)

RNP APCH.

V Baro-VNAV and VDP NA when using Cartersville altimeter setting. Rwy 28 helicopter visibility reduction below $\frac{3}{4}$ SM NA. For uncompensated Baro-VNAV systems, LNAV/VNAV NA below -8°C or above 54°C . Obtain local altimeter setting on CTAf, when not received, use Cartersville altimeter setting; increase LPV DA to 1287 feet; increase LNAV/VNAV DA to 1353 feet and all visibility $\frac{1}{2}$ SM; increase all MDAs 80 feet and visibility Cats C and D $\frac{1}{2}$ SM.

MISSED APPROACH:
Climb to 1500 then
climbing left turn to
3100 direct GUSSY
and hold.

ATLANTA CENTER
124.5 270.325

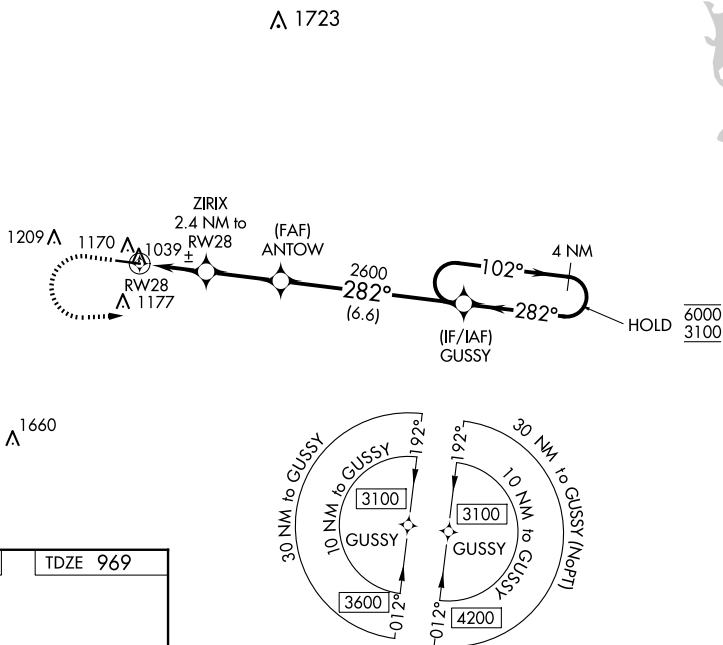
UNICOM
122.8 (CTAF) **L**

Diagram illustrating a runway layout. A horizontal line represents the runway, with a bearing of 282° indicated by an arrow. The line is labeled "0.7% UP" and "5060 X 75". A small star symbol is located near the left end of the line, and a small circle is located near the right end. The diagram is associated with the text "ELEV 974" and "TDZE 969".

* LNAV only.

1500 3100 GUSSY

ZIRIX 2.4 NM to RW28

ANTOW 2600

GUSSY

4 NM Holding Pattern

102° 282°

1740* 2600

GP 3.00° TCH 41

1 NM 1.4 NM 2.7 NM 6.6 NM

CATEGORY	A	B	C	D
LPV DA		1219-1	250 (300-1)	
LNAV/VNAV DA		1285-1	316 (400-1)	
LNAV MDA		1300-1	331 (400-1)	

RNAV (GPS) RWY 28