

VORTAC SLT	APP CRS	Rwy Idg	4300
113.9	264°	TDZE	1934
Chan 86		Apt Elev	1934

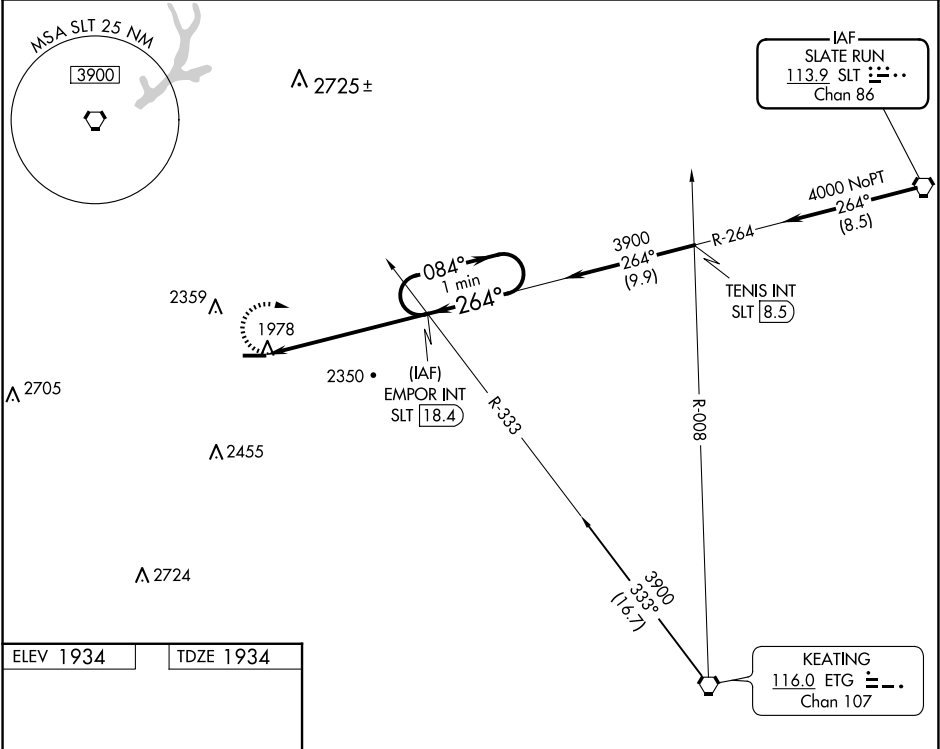
VOR RWY 28  
ST MARYS MUNI (OYM)

**⚠** Night landing: Rwy 28 NA. Helicopter visibility reduction below 1 SM NA. When local altimeter setting not received, use Bradford altimeter setting and increase all MDA 240 feet, and S-28 Cat B and Circling Cat B/C visibility ¼ mile and S-28 Cat C/D ½ mile. Inoperative table does not apply to Cats C/D.

**MALS**  
A2

**MISSED APPROACH:**  
Climbing right turn to 3900 via SLT R-264 to EMPOR INT/18.4 DME and hold.

AWOS-3P	CLEVELAND CENTER	ALTOONA CLNC DEL	UNICOM
118.05	126.725 291.65	122.4	122.7 (CTAF) 0



ELEV 1934	TDZE 1934
-----------	-----------

0.7% UP →

4300 X 75

MIRL Rwy 10-28 0

FAF to MAP 6.1 NM					
Knots	60	90	120	150	180
Min:Sec	6:06	4:04	3:03	2:26	2:02

3900 SLT R-264 EMPOR INT

EMPOR INT SLT 18.4

One Minute Holding Pattern

084° → 3900

← 264°

3.00° TCH 40

6.1 NM

CATEGORY	A	B	C	D
S-28	2820-1	886 (900-1)	2820-2½	886 (900-2½)
CIRCLING	2820-1¼	886 (900-1¼)	2820-2¾ 886 (900-2¾)	2820-3 886 (900-3)