

LOC/DME I-OYM
108.9
Chan **26**

APP CRS
281°

Rwy Idg
TDZE
1934
Apt Elev
1934

LOC RWY 28
ST MARYS MUNI (OYM)

DME required.

▼

NA

✂

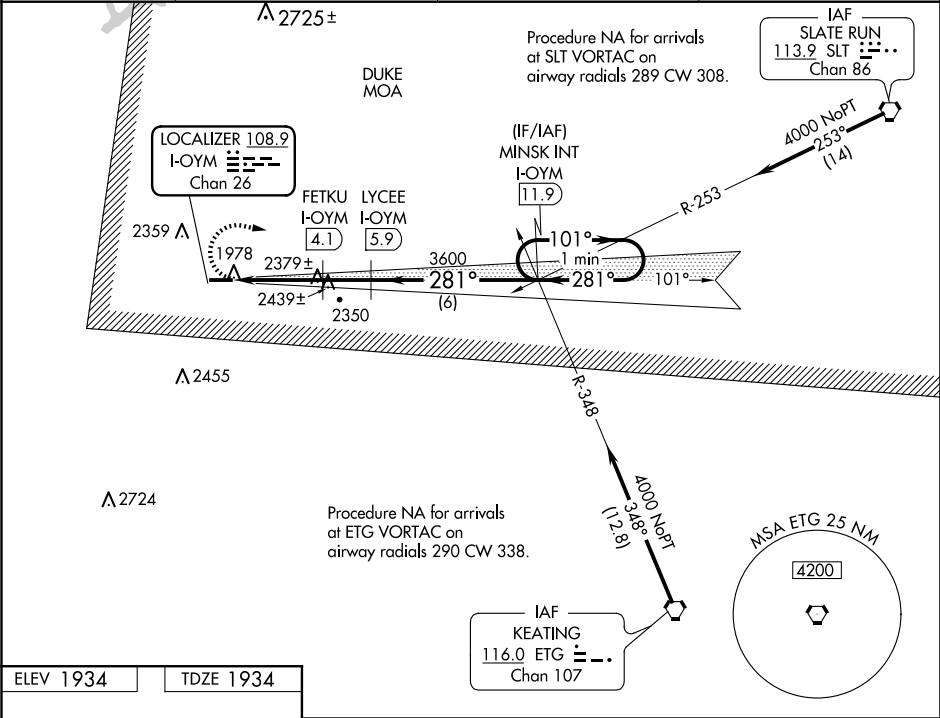
Inop table does not apply to Cat A. Rwy 28 helicopter visibility reduction below ¾ SM NA. VDP NA when using Bradford altimeter setting. When local altimeter setting not received, use Bradford altimeter setting and increase all MDA 240 feet and S-28 Cat B visibility ¼ SM, Cat C/D ½ SM and Circling Cat A ¼ SM, Cat B ½ SM, Cat C ¾ SM. ✂ -36°C For inop ALS, increase S-28 Cat C/D visibility to 2 ½ SM. For inop ALS when using Bradford altimeter setting, increase S-28 Cat C/D visibility to 3 SM.

MALS

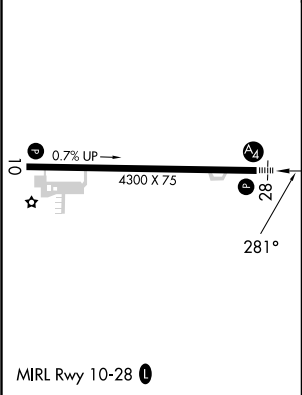
4

MISSED APPROACH:
Climbing right turn to 4000 on I-OYM east course to MINSK INT/
11.9 DME and hold.

AWOS-3P 118.05	CLEVELAND CENTER 126.725 291.65	ALTOONA CLNC DEL 122.4	UNICOM 122.7 (CTAF) 0
--------------------------	---	----------------------------------	---------------------------------



ELEV 1934	TDZE 1934
-----------	-----------



4000		I-OYM east crs	MINSK INT		
		I-OYM [0.8]	FETKU I-OYM [4.1]	LYCEE I-OYM [5.9]	MINSK INT I-OYM [11.9]
		3060	3600	One Minute Holding Pattern	
		2.4 NM	0.9 NM	1.7 NM	6 NM
CATEGORY	A	B	C	D	
S-28	2740-1	806 (900-1)	2740-2	806 (900-2)	
CIRCLING	2740-1 806 (900-1)	2740-1¼ 806 (900-1¼)	2740-2½ 806 (900-2½)	2840-2¾ 906 (1000-2¾)	