

APP CRS
050°

Rwy Idg
TDZE
Apt Elev

2354
150
150

RNAV (GPS) RWY 5

PINE VALLEY (19N)

RNP APCH.

▼

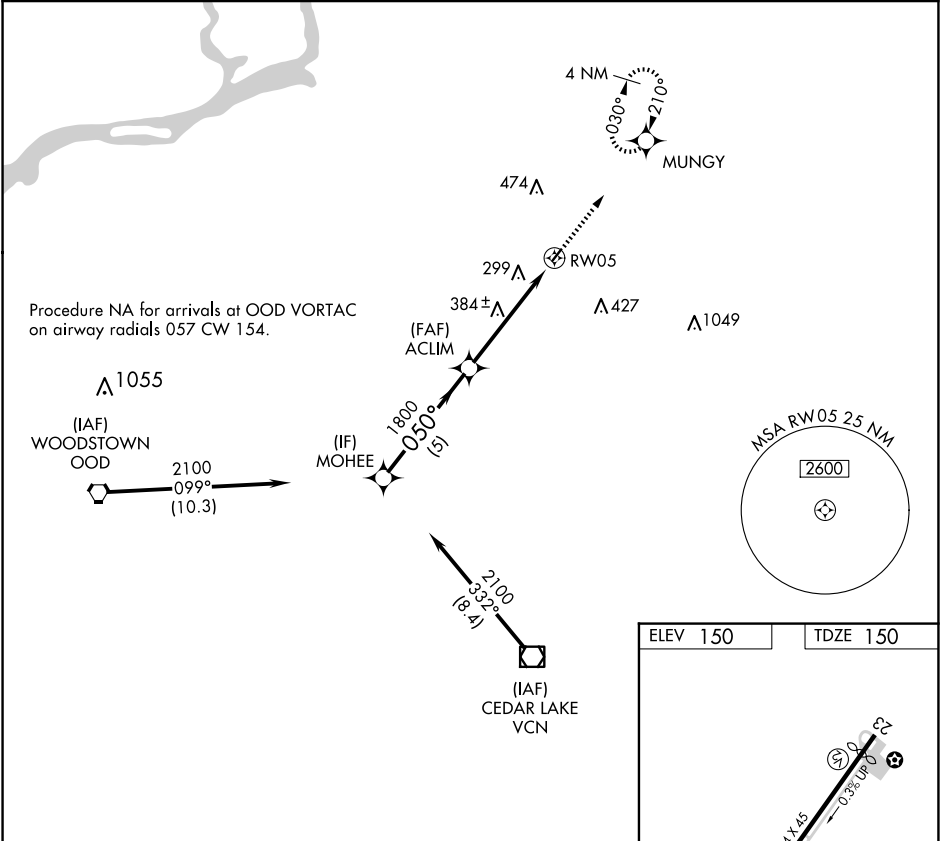
NA

Rwy 5 helicopter visibility reduction below 1 SM NA.
Procedure NA at night. Use Mount Holly altimeter setting; when not received use Philadelphia Intl altimeter setting and increase all MDA 20 feet.

MISSED APPROACH: Climb to 2000 direct MUNGY and hold.

MC GUIRE APP CON
126.475 363.8

UNICOM
123.0 (CTAF)



MOHEE

Visual Segment - Obstacles.

2000

MUNGY

2100

050°

1800

RW05

5 NM

5 NM

CATEGORY

A

B

C

D

LNAV MDA

740-1 590 (600-1)

NA

ELEV 150

TDZE 150

REIL Rwy 5 and 23

MIRL Rwy 5-23