

APP CRS
230°

Rwy Idg
2855

TDZE
142

Apt Elev
150

RNAV (GPS) RWY 23

Pine Valley (19N)

RNP APCH.

▼

▲ NA

Rwy 23 helicopter visibility reduction below 1 SM NA. Use Mount Holly altimeter setting; if not received use Philadelphia Intl altimeter setting and increase all MDA 20 feet. Procedure NA at night.

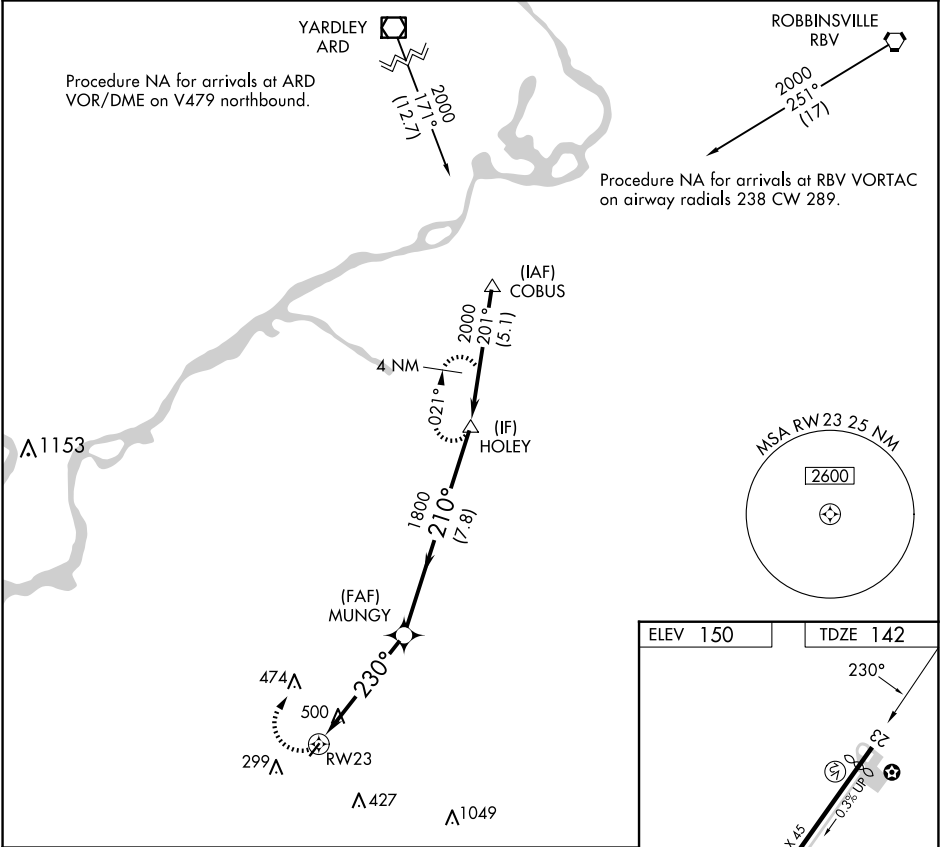
MISSED APPROACH: Climbing right turn to 2000 direct HOLEY and hold.

MC GUIRE APP CON

126.475 363.8

UNICOM

123.0 (CTAF) 1



2000

HOLEY

Visual Segment - Obstacles.

HOLEY

MUNGY

210°

2000

RW23

230°

1800

5 NM

7.8 NM

CATEGORY

A

B

C

D

LNAV MDA

840-1

698 (700-1)

NA

REIL Rwy 5 and 23 1

MIRL Rwy 5-23 1