

VOR/DME AHN  
**116.95**  
Chan **116**(Y)

APP CRS  
**319°**

Rwy Idg  
TDZE **951**  
Apt Elev **951**

VOR RWY 35

JACKSON COUNTY (JCA)

DME required.

▼

▲

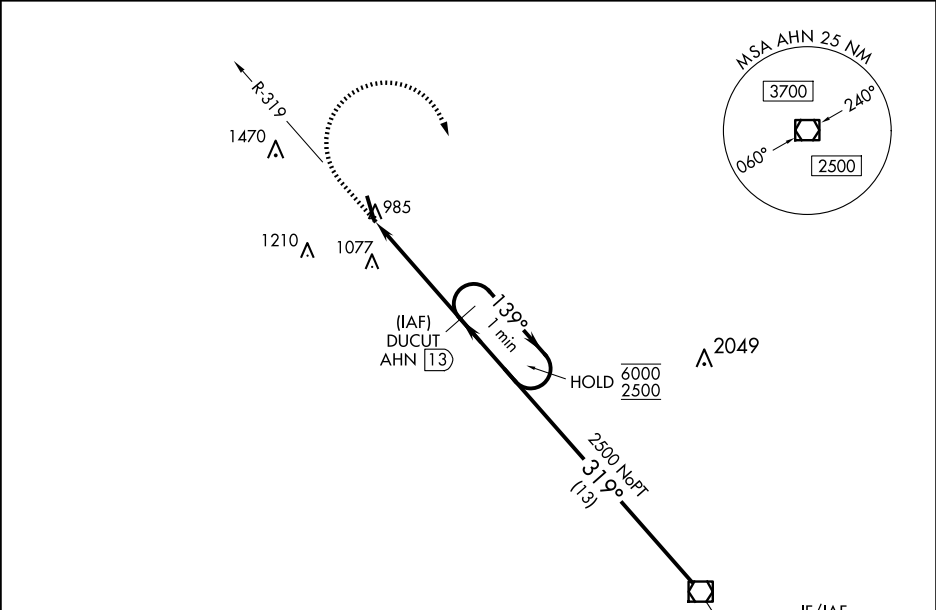
Circling NA for Cat D southwest of Rwy 17-35. Rwy 35 helicopter visibility reduction below 1 SM NA. Procedure NA at night. When local altimeter setting not received, use Winder altimeter setting and increase all MDA 40 feet and S-35 Cats C/D visibility ½ SM.

MISSED APPROACH: Climb to 1700 then climbing right turn to 2500 on heading 200° and AHN VOR/DME R-319 to DUCUT/AHN 13 DME and hold.

AWOS-3PT  
**118.125**

ATLANTA APP CON ★  
**132.475 291.1**

UNICOM  
**122.975 (CTAF) 0**



ELEV **951**

TDZE **951**

Procedure NA for arrival on AHN VOR/DME airway radials 297 CW 340.

IF/IAF  
ATHENS  
116.95 AHN  
Chan 116 (Y)

1700

2500

hdg  
200°

ahn  
R-319

dicut  
ahn  
13

ahn  
17.7

ahn  
13

One Minute  
Holding Pattern

139°

319°

6000

2500

3.00°

TCH 54

4.7 NM

CATEGORY	A	B	C	D
S-35	1380-1	429 (500-1)	1380-1¼	429 (500-1¼)
CIRCLING	1440-1	489 (500-1)	1580-1¾ 629 (700-1¾)	1580-2 629 (700-2)