

WAAS CH 82704 W35A	APP CRS 348°	Rwy Idg 5010 TDZE 951 Apt Elev 951
--	------------------------	---

RNAV (GPS) RWY 35
JACKSON COUNTY (JCA)

RNP APCH-GPS.

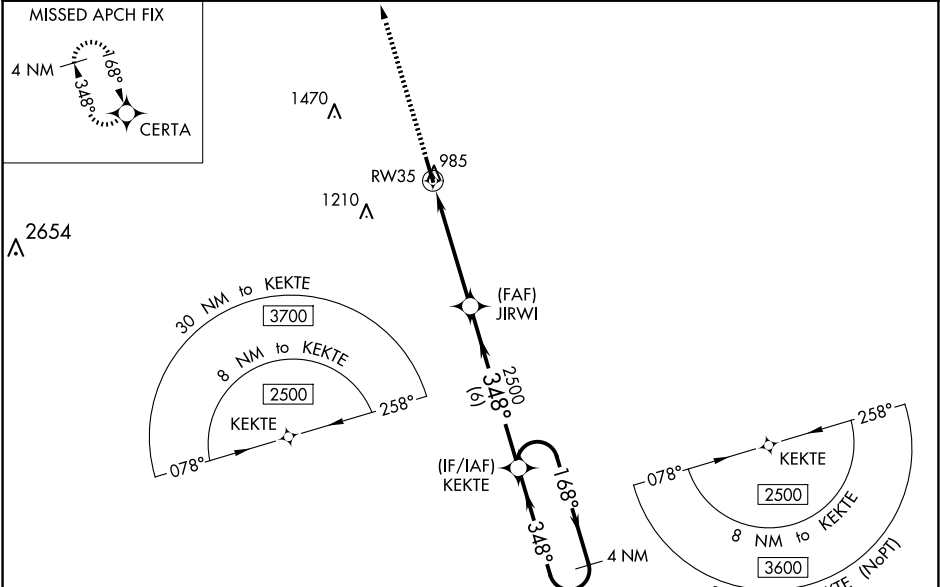
▼

▲

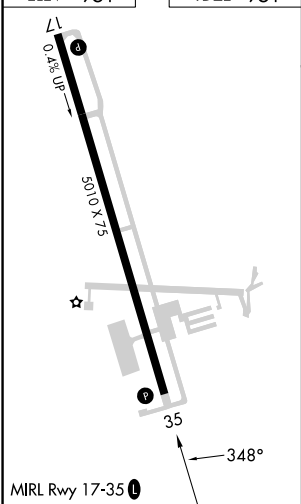
For uncompensated Baro-VNAV systems, LNAV/VNAV NA below -16°C or above 54°C. Circling NA for Cat D west of Rwy 17-35. Baro-VNAV and VDP NA when using Winder altimeter setting. Rwy 17 helicopter visibility reduction below ¼ SM NA. When local altimeter setting not received, use Winder altimeter setting; increase LPV DA to 1232 feet and visibility all Cats ½ SM; increase LNAV/VNAV DA to 1241 feet and visibility all Cats ½ SM; increase all MDAs 40 feet and LNAV visibility Cats C/D ½ SM.

MISSED APPROACH:
Climb to 3700 direct
CERTA and hold.

AWOS-3PT 118.125	ATLANTA APP CON★ 132.475 291.1	UNICOM 122.975 (CTAF) 0
----------------------------	--	-----------------------------------



ELEV 951	TDZE 951
-----------------	-----------------



3700	CERTA	JIRWI	2500	KEKTE	4 NM Holding Pattern
↑	✦	2500	1.1 NM to RW35	348°	168° → 2500
			1.1 NM	3.6 NM	6 NM
					GP 3.00° TCH 54
CATEGORY	A	B	C	D	
LPV DA		1201-7/8	250 (300-7/8)		
LNAV/VNAV DA		1210-7/8	259 (300-7/8)		
LNAV MDA	1340-1	389 (400-1)	1340-1 1/8	389 (400-1 1/8)	
CIRCLING	1440-1	489 (500-1)	1580-1 3/4 629 (700-1 3/4)	1580-2 629 (700-2)	

SE-4, 07 AUG 2025 to 04 SEP 2025

SE-4, 07 AUG 2025 to 04 SEP 2025