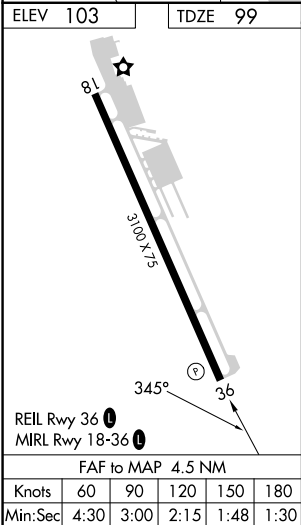
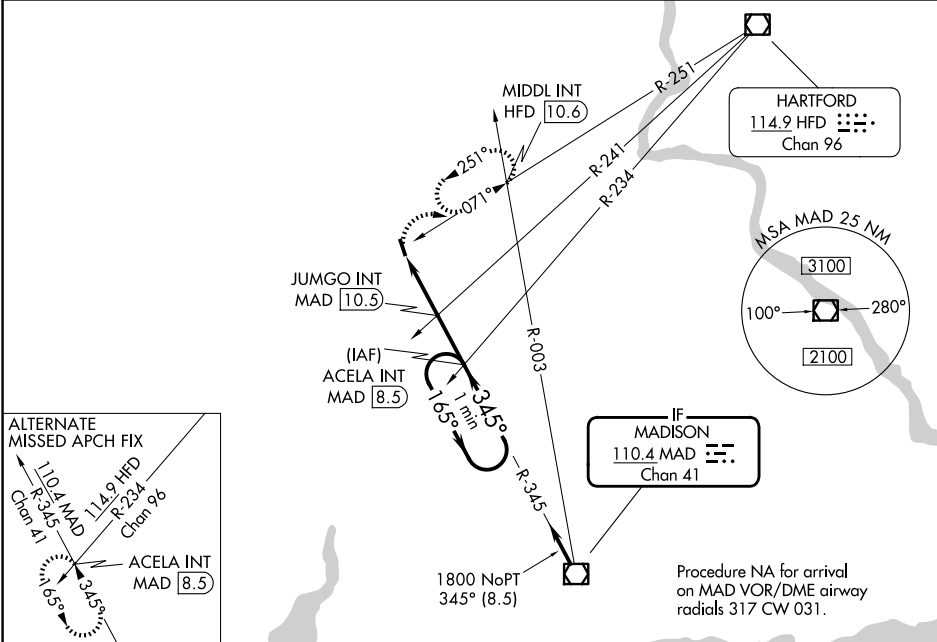



VOR/DME MAD	APP CRS	Rwy Ldg	3100
110.4	345°	TDZE	99
Chan 41		Apt Elev	103

VOR RWY 36
MERIDEN MARKHAM MUNI (MMK)

<div><div><div><div></div><div></div></div><div><div></div><div></div></div></div><div>Rwy 36 helicopter visibility reduction below 1 SM NA. Procedure NA at night.</div></div>		MISSED APPROACH: Climbing right turn to 2700 on HFD VOR/DME R-251 to MIDDLE INT/HFD 10.6 DME and hold, continue climb-in-hold to 2700.	
ASOS 134.925	YANKEE APP CON 127.8 269.325	CLNC DEL 120.65	UNICOM 123.05 (CTAF) 0



<div><div>2700</div><div>HFD R-251</div></div>		<div>MIDDL INT</div>		<div>JUMGO INT MAD 10.5</div>		<div>ACELA INT MAD 8.5</div>		<div>One Minute Holding Pattern</div>	
				<div>≤ 3.50° TCH 38</div>		<div>165° → 2100 ← 345°</div>			
		<div>1060</div>		<div>1800</div>					
		<div>2.5 NM</div>		<div>2 NM</div>					
CATEGORY	A		B		C		D		
S-36	1060-1¼ 961 (1000-1¼)		1060-1½ 961 (1000-1½)		NA				
 CIRCLING	1060-1¼ 957 (1000-1¼)		1060-1½ 957 (1000-1½)		NA				
JUMGO FIX MINIMUMS (DUAL VOR RECEIVERS OR DME REQUIRED)									
S-36	880-1 781 (800-1)		880-1¼ 781 (800-1¼)		NA				
CIRCLING	880-1 777 (800-1)		920-1¼ 817 (900-1¼)		NA				