

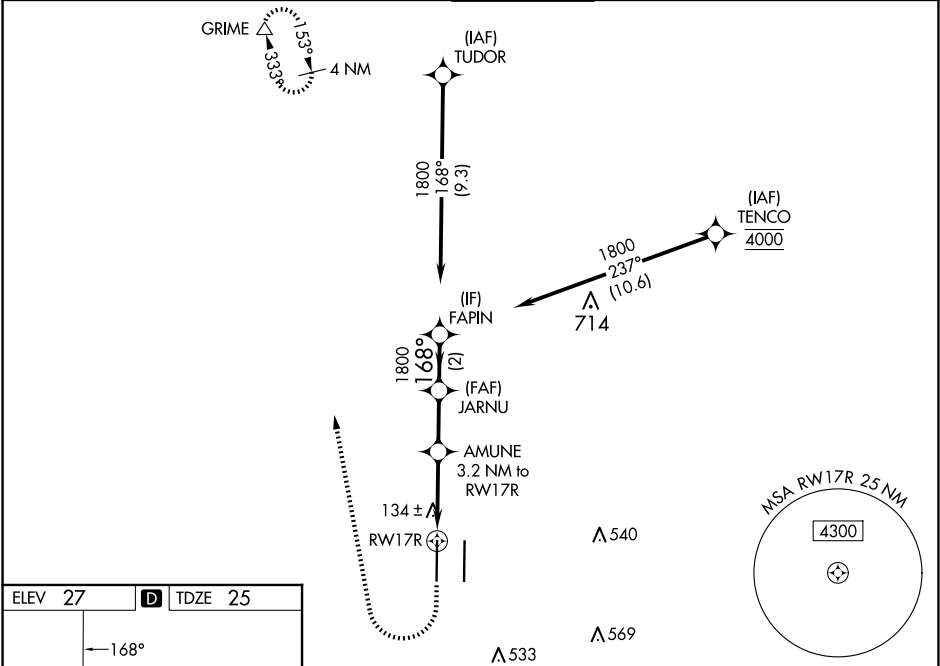
WAAS CH 65728 W17A	APP CRS 168°	Rwy Ldg TDZE 25 Apt Elev 27
--	------------------------	---

RNAV (GPS) Y RWY 17R

SACRAMENTO INTL (SMF')

RNP APCH - GPS.	ALSF-2	MISSED APPROACH: Climb to 500 then climbing right turn to 2000 direct GRIME and hold.
Circling NA east of Rwy 17R-35L. Simultaneous approach authorized. Use of FD or AP required during simultaneous operations. LNAV procedure NA during simultaneous operations. For uncompensated Baro-VNAV systems, LNAV/VNAV NA below -4°C or above 54°C. For inop ALS, increase LNAV/VNAV all Cats visibility to RVR 4500 and LNAV all Cats visibility to RVR 5500.		

D-ATIS 126.75	NORCAL APP CON 125.4 259.1 (W-NE) 125.25 257.9 (SW) 127.4 317.5 (E-SE)	CAPITOL TOWER 125.7 256.7	GND CON 121.7 256.7	CLNC DEL 121.1 256.7	CPDLC
-------------------------	---	-------------------------------------	-------------------------------	--------------------------------	-------



ELEV 27	D	TDZE 25
168°		
171°		
8598 X 150		
8605 X 150		
35L		
35R		
TDZ/CL Rwy 17L and 17R		
HIRL Rwy 17R-35L and 17L-35R		

500	2000	GRIME	VGSI and RNAV glidepath not coincident (VGSI Angle 3.00/TCH 72).			
CATEGORY		A	B	C	D	
LPV	DA	225/18 200 (200-½)				
LNAV/ VNAV	DA	323/24 298 (300-½)				
LNAV	MDA	400/24	375 (400-½)	400/35	375 (400-¾)	
CIRCLING		440-1 413 (500-1)	480-1 453 (500-1)	480-1½ 453 (500-1½)	580-2 553 (600-2)	