

APP CRS  
**348°**

Rwy Ldg  
TDZE  
Apt Elev

**8605**  
**24**  
**27**

**RNAV (RNP) Z RWY 35R**  
SACRAMENTO INTL (SMF)

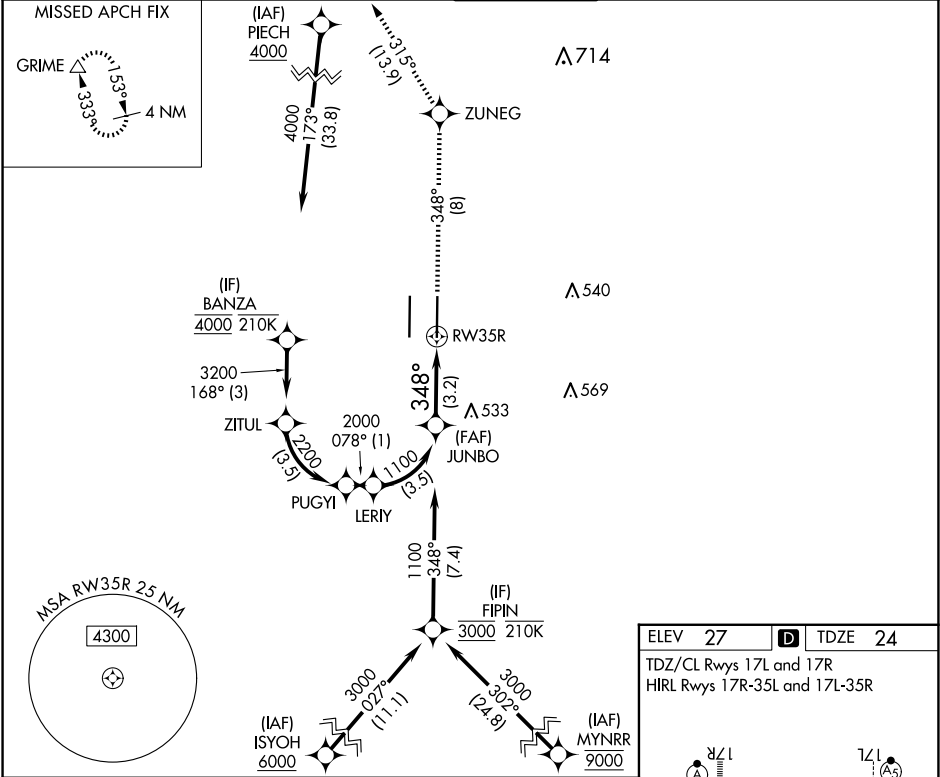
RNP AR APCH-GPS.

▼

For uncompensated Baro-VNAV systems, procedure NA below -2°C or above 54°C.

MISSED APPROACH: Climb to 2000 on track 348° to ZUNEG and on track 315° to GRIME and hold.

D-ATIS <b>126.75</b>	NORCAL APP CON <b>125.4 259.1 (W-NE) 125.25 257.9 (SW) 127.4 317.5 (E-SE)</b>	CAPITOL TOWER <b>125.7 256.7</b>	GND CON <b>121.7 256.7</b>	CLNC DEL <b>121.1 256.7</b>	CPDLC
-------------------------	--	-------------------------------------	-------------------------------	--------------------------------	-------



JUNBO  
1100

GP 3.00°  
TCH 64

348°

RW35R

See planview for multiple IF locations.

3.2 NM

CATEGORY

A

B

C

D

RNP 0.10 DA

316/45 292 (300-7%)

RNP 0.30 DA

384/55 360 (400-1)

**AUTHORIZATION REQUIRED**

ELEV 27

D

TDZE 24

TDZ/CL Rwys 17L and 17R

HIRL Rwys 17R-35L and 17L-35R

RZL

A

d

6598 X 150

A5

35L

348°

TWR

STAR

6605 X 150

A5

d

35R