
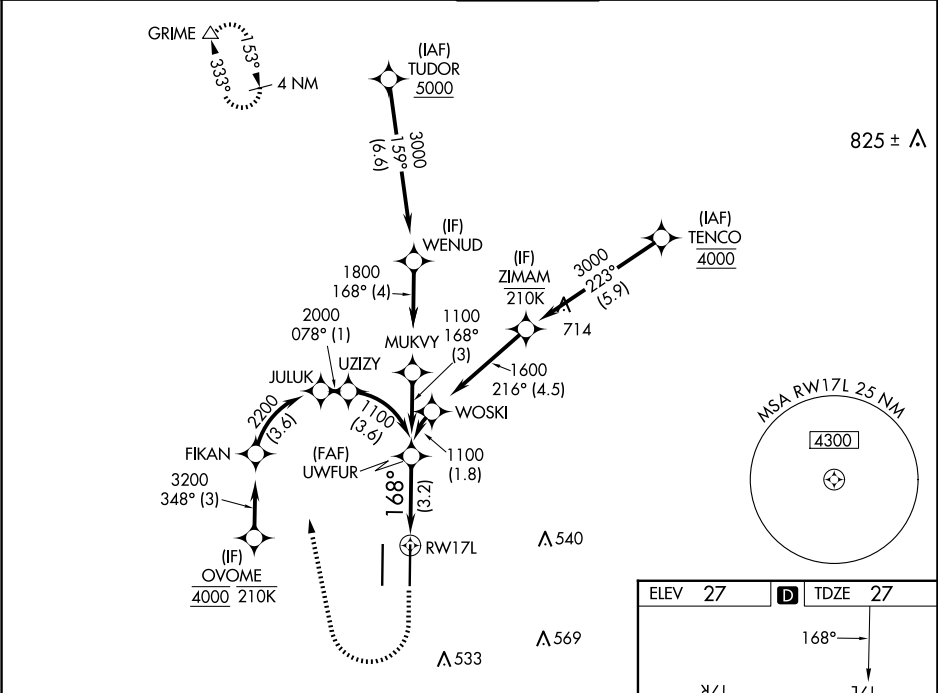




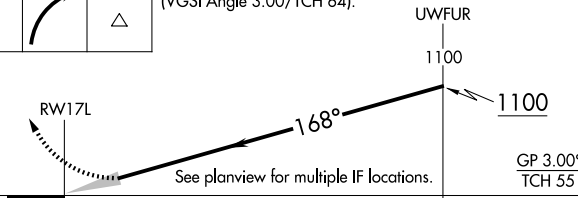
| | | |
|---------|----------|------|
| APP CRS | Rwy Ldg | 8605 |
| 168° | TDZE | 27 |
| | Apt Elev | 27 |

RNAV (RNP) Z RWY 17L

SACRAMENTO INTL (SMF)

| | | | | | | |
|--|---|---|---|---|--|------------------|
| RNP AR APCH-GPS. | | <div>MALSR</div> <div></div> | <div>MISSED APPROACH: Climb to 500 then right turn to 3000 direct GRIME and hold.</div> <div>*Missed approach requires minimum climb of 290 feet per NM to 3000.</div> <div>#Missed approach requires minimum climb of 300 feet per NM to 3000.</div> | | | |
| <div><div><div>▼</div></div><div>For uncompensated Baro-VNAV systems, procedure NA below -2°C or above 54°C. For inop ALS, increase RNP 0.12 all Cats visibility to RVR 4000; increase RNP 0.30 all Cats visibility to RVR 4500.</div></div> | | | | | | |
| <div>D-ATIS</div> <div>126.75</div> | <div>NORCAL APP CON</div> <div>125.4 259.1 (W-NE) 125.25 257.9 (SW)</div> <div>127.4 317.5 (E-SE)</div> | | <div>CAPITOL TOWER</div> <div>125.7 256.7</div> | <div>GND CON</div> <div>121.7 256.7</div> | <div>CLNC DEL</div> <div>121.1 256.7</div> | <div>CPDLC</div> |



| | | | | | | |
|------------------------|---|--|--|---|--|--|
| 500 ↑ | 3000  | GRIME  | VGSI and RNAV glidepath not coincident (VGSI Angle 3.00/TCH 64). | | | |
| | | |  | | | |
| CATEGORY | A | B | C | D | | |
| RNP 0.12 DA# | 277/24 250 (300-½) | | | | | |
| RNP 0.30 DA* | 339/24 312 (400-½) | | | | | |
| AUTHORIZATION REQUIRED | | | | | | |

