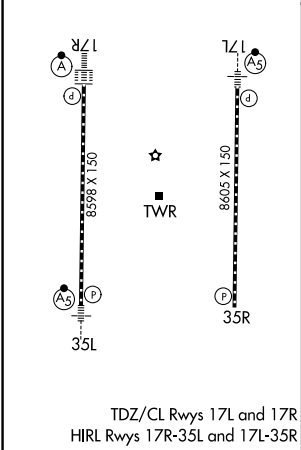
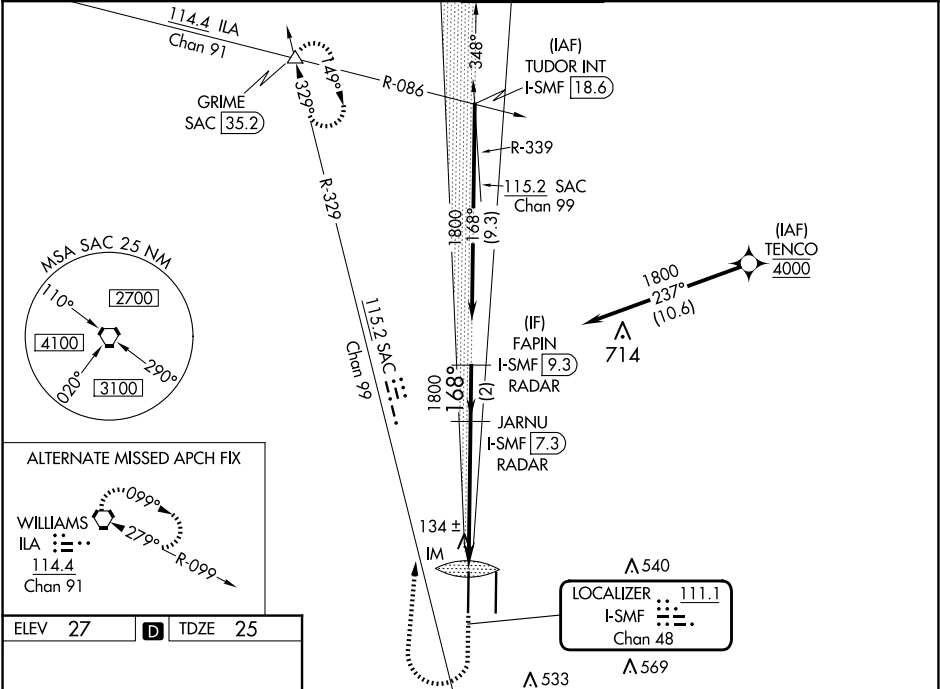


LOC/DME I-SMF 111.1 Chan 48	APP CRS 168°	Rwy Ldg 8598 TDZE 25 Apt Elev 27
---	------------------------	---

ILS RWY 17R (CAT II & III)
SACRAMENTO INTL (SMF)

Aircraft not GPS equipped - RADAR required for procedure entry. DME or RADAR required. RNP APCH-GPS. From TENCO.	ALSF-2 	MISSED APPROACH: Climb to 500 then climbing right turn to 2000 on heading 350° and SAC VORTAC R-329 to GRIME INT/SAC 35.2 DME and hold.
Simultaneous approach authorized.		

D-ATIS 126.75	NORCAL APP CON 125.4 259.1 (W-NE) 125.25 257.9 (SW) 127.4 317.5 (E-SE)	CAPTOL TOWER 125.7 256.7	GND CON 121.7 256.7	CLNC DEL 121.1 256.7	CPDLC
-------------------------	--	------------------------------------	-------------------------------	--------------------------------	-------



500	2000	SAC R-329	GRIME	VGSi and ILS glidepath not coincident (VGSi Angle 3.00/TCH 72).
JARNU I-SMF 7.3 RADAR 1800				
FAPIN I-SMF 9.3 RADAR 1800				
GS 3.00° TCH 57				
CATEGORY	A	B	C	D
S-ILS 17R	CAT II RA 103/12 100 DA 125			
S-ILS 17R	CAT III RVR 06			
CATEGORY II & III ILS - SPECIAL AIRCREW & AIRCRAFT CERTIFICATION REQUIRED				

SW-2, 07 AUG 2025 to 04 SEP 2025

SW-2, 07 AUG 2025 to 04 SEP 2025