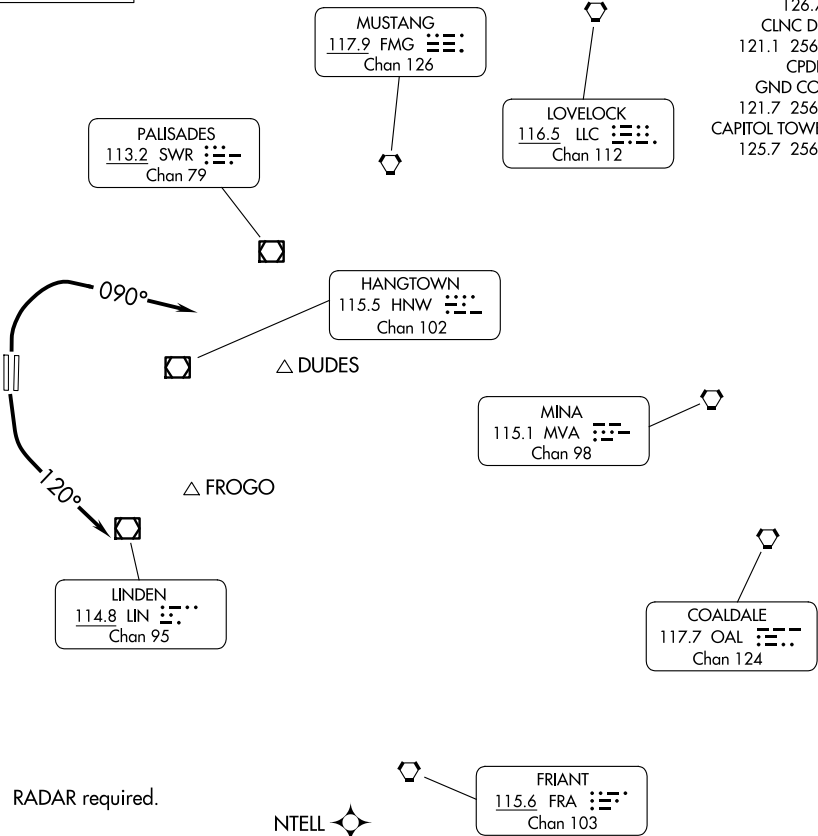


TOP ALTITUDE:
ASSIGNED BY ATC

NORCAL DEP CON
127.4 317.5
D-ATIS
126.75
CLNC DEL
121.1 256.7
CPDLC
GND CON
121.7 256.7
CAPITOL TOWER
125.7 256.7



NOTE: RADAR required.

TAKEOFF MINIMUMS

Rwys 17R, 35L/R: Standard.
Rwy 17L: Standard with minimum climb of 220' per NM to 700.

NOTE: Chart not to scale.



DEPARTURE ROUTE DESCRIPTION

TAKEOFF RUNWAYS 17L/R: Climbing left turn heading 120°, or as assigned by ATC, for RADAR vectors to assigned route/fix, thence. . . .
TAKEOFF RUNWAYS 35L/R: Climbing right turn heading 090°, or as assigned by ATC, for RADAR vectors to assigned route/fix, thence. . . .

. . . .maintain ATC assigned altitude. Expect filed altitude ten minutes after departure.