

| | | | |
|--|------------------------|-----------------------------|---|
| WAAS CH 72906 W18A | APP CRS 185° | Rwy Ldg TDZE Apt Elev | 9801 609 629 |
|--|------------------------|-----------------------------|---|

RNAV (GPS) RWY 18L

HUNTSVILLE INTL-CARL T JONES FLD (HSV)

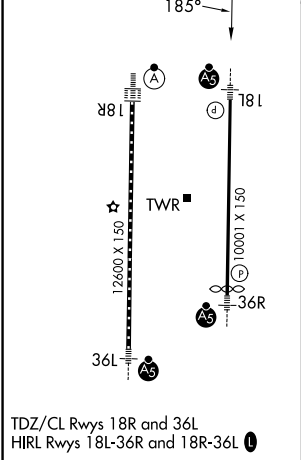
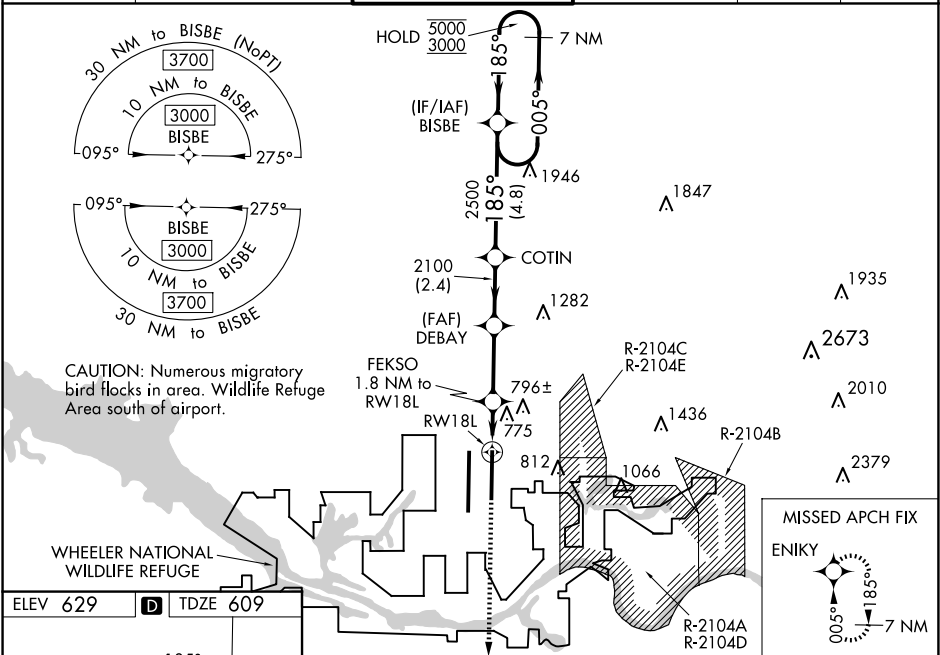
RNP APCH - GPS.


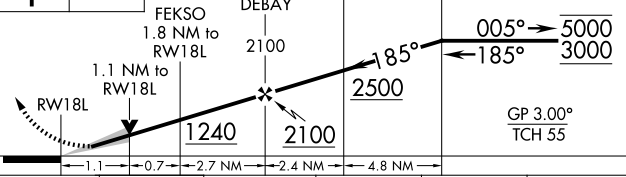

For uncompensated Baro-VNAV systems, LNAV/VNAV NA below -9°C or above 54°C.
Circling NA for Cats C/D/E east of Rwy 18L-36R. For inop ALS, increase LPV Cat E visibility to RVR 4000, LNAV/VNAV Cat E visibility to 1½ SM, and LNAV Cat E visibility to 1¼ SM. Simultaneous approach authorized. LNAV procedure NA during simultaneous operations. Use of FD or AP required during simultaneous operations.
* RVR 1800 authorized with use of FD or AP or HUD to DA.



MISSED APPROACH:
Climb to 3000 direct
ENIKY and hold.

| | | | | | |
|-----------------------|--|--|---------------------------------|---------------------------|-------------------------|
| ATIS 121.25 | HUNTSVILLE APP CON ★ 125.6 354.1 | HUNTSVILLE TOWER ★ 127.6 (CTAF) 350.35 | GND CON 121.9 269.525 | CLNC DEL 120.35 | UNICOM 122.95 |
|-----------------------|--|--|---------------------------------|---------------------------|-------------------------|



| | | | | | |
|--|--|---|-------------------------|-----------------------|-------------------------|
| 3000 ↑ | ENIKY  | VGSI and RNAV glidepath not coincident (VGSI Angle 3.00/TCH 73). | | | 7 NM Holding Pattern |
|  | | | | | |
| CATEGORY | A | B | C | D | E |
| LPV DA* | 809/24 200 (200-½) | | | | |
| LNAV/VNAV DA | 1057/45 448 (500-¾) | | | | |
| LNAV MDA | 1040/24 431 (500-½) | | 1040/40 431 (500-¾) | | |
|  CIRCLING | 1160-1 531 (600-1) | | 1160-1½ 531 (600-1½) | 1240-2 611 (700-2) | 1260-2¼ 631 (700-2¼) |