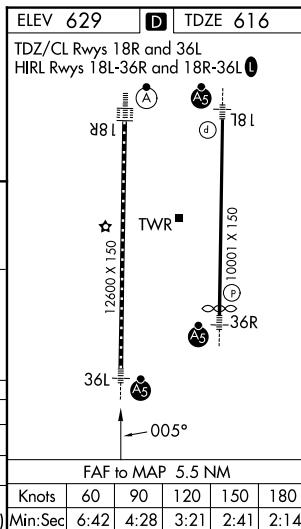


ILS or LOC RWY 36L  
HUNTSVILLE INTL-CARL T JONES FLD (HSV)

MALSI

**MISSED APPROACH:** Climb to 1100 then climbing left turn to 3000 on heading 350° and RQZ R-261 to TANNE/RQZ 17.6 DME and hold.

GND CON <b>121.9 269.525</b>	CLNC DEL <b>120.35</b>	UNICOM <b>122.95</b>
---------------------------------	---------------------------	-------------------------



Knots	60	90	120	150	180
Min:Sec	6:42	4:28	3:21	2:41	2:14