

APP CRS  
276°

Rwy Idg  
TDZE  
Apt Elev

4298  
813  
818

RNAV (GPS) RWY 28

IONIA COUNTY (Y70)

RNP APCH - GPS.

⚠

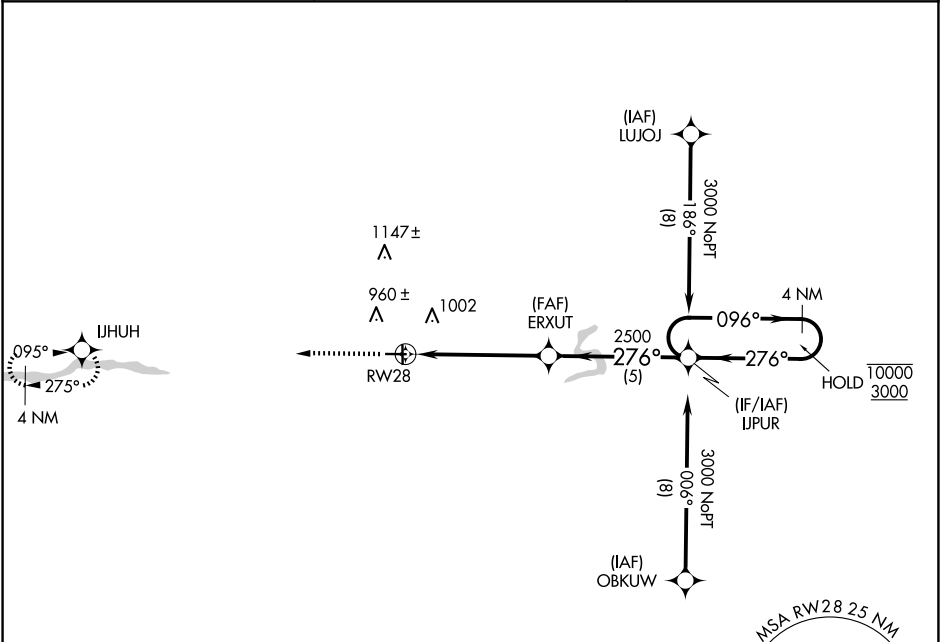
Circling NA to Rwy 18 and 36. Rwy 28 helicopter visibility reduction below ¾ SM NA.

MISSED APPROACH: Climb to 3000 direct IJHUH and hold.

AWOS-3  
118.9

GREAT LAKES APP CON ★  
118.65 226.4

UNICOM  
122.8 (CTAF) 0



ELEV 818

TDZE 813

1953

3000

IJHUH

VGSI and descent angles not coincident (VGSI Angle 3.00/TCH 22).

4 NM Holding Pattern

1.3 NM to RWY 28

ERXUT

IJHUR

096°

276°

10000

3000

1.3

3.8 NM

5 NM

CATEGORY	A	B	C	D
LNAV MDA	1240-1	427 (500-1)	1240-1¼ 427 (500-1¼)	NA
CIRCLING	1320-1	502 (600-1)	1340-1½ 522 (600-1½)	NA