

WAAS CH <b>42544</b> <b>W10A</b>	APP CRS <b>096°</b>	Rwy Idg TDZE <b>814</b> Apt Elev <b>818</b>
--	------------------------	---

RNAV (GPS) RWY 10  
IONIA COUNTY (Y70)

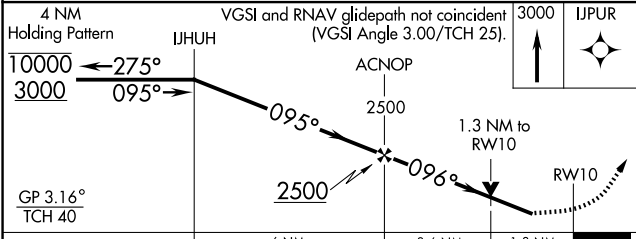
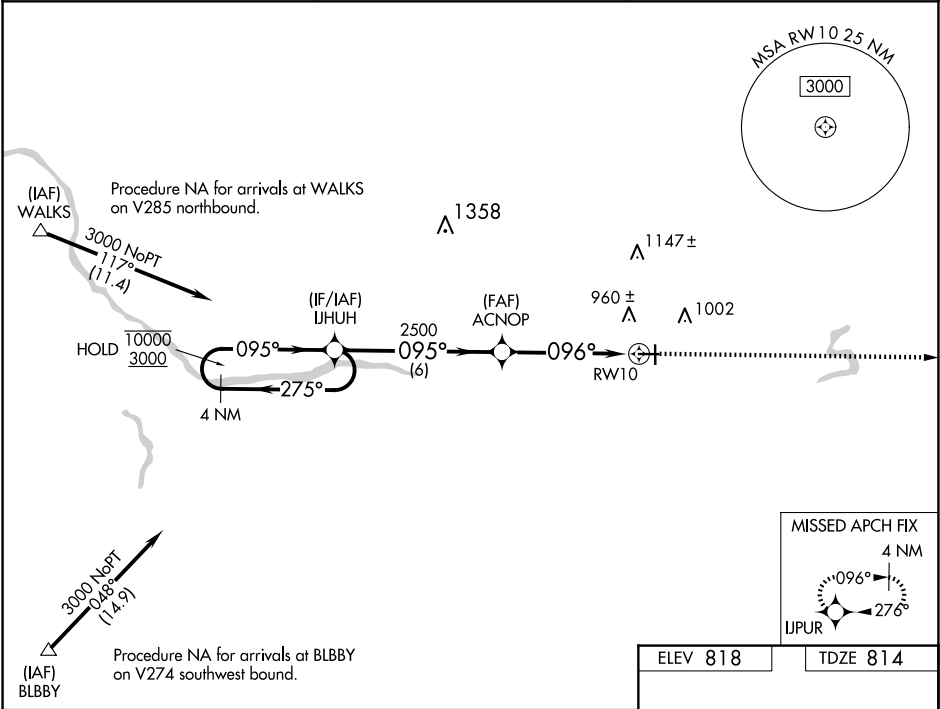
RNP APCH - GPS.

⚠

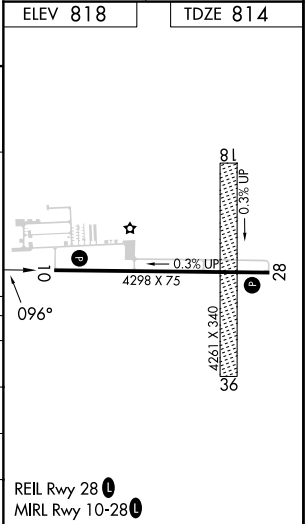
Circling NA to Rws 18 and 36. Rwy 10 helicopter visibility reduction below ¾ SM NA.  
For uncompensated Baro-VNAV systems, LNAV/VNAV NA below -16°C or above 54°C.

MISSED APPROACH: Climb to 3000 direct IJPUR and hold.

AWOS-3 <b>118.9</b>	GREAT LAKES APP CON★ <b>118.65 226.4</b>	UNICOM <b>122.8 (CTAF) 0</b>
------------------------	---	---------------------------------



CATEGORY	A	B	C	D
LPV DA	1064-¾	250 (300-¾)		NA
LNAV/VNAV DA	1064-¾	250 (300-¾)		NA
LNAV MDA	1260-1	446 (500-1)	1260-1⅜ 446 (500-1⅜)	NA
CIRCLING	1320-1	502 (600-1)	1340-1½ 522 (600-1½)	NA



EC-1, 07 AUG 2025 to 04 SEP 2025

EC-1, 07 AUG 2025 to 04 SEP 2025