

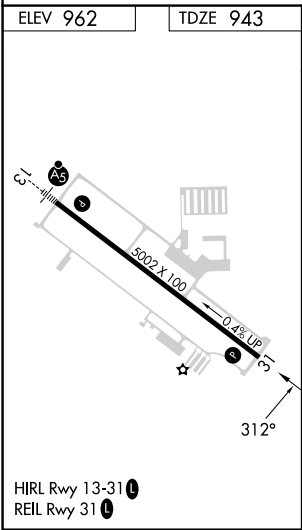
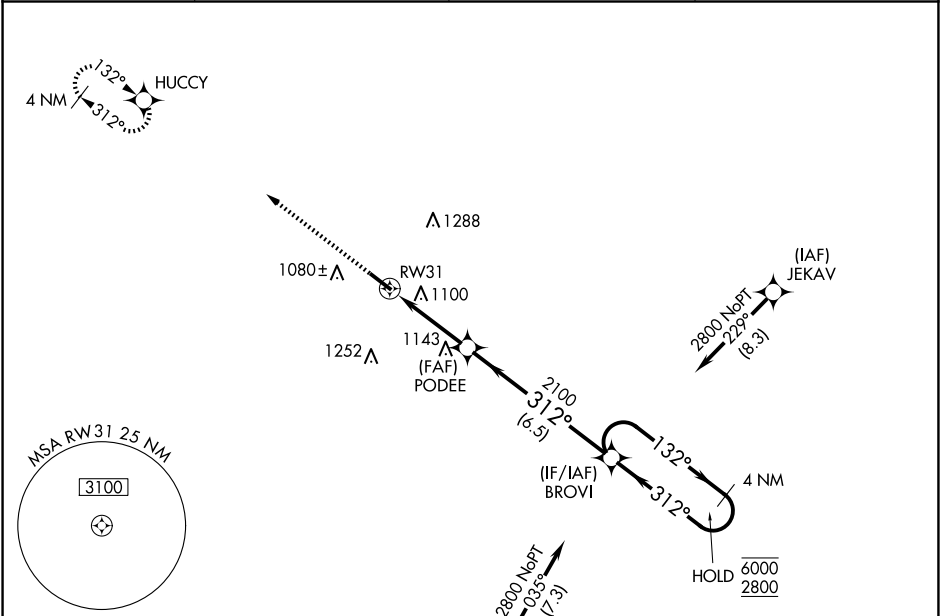
WAAS CH <b>99722</b> <b>W31A</b>	APP CRS <b>312°</b>	Rwy Idg TDZE <b>943</b> Apt Elev <b>962</b>	<b>5002</b> <b>943</b> <b>962</b>
----------------------------------------	------------------------	---------------------------------------------------	-----------------------------------------

RNAV (GPS) RWY 31

LIVINGSTON COUNTY SPENCER J HARDY (OZW)

RNP APCH.			MISSED APPROACH: Climb to 3000 direct HUCCY and hold.
For uncompensated Baro-VNAV systems, LNAV/VNAV NA below -16°C or above 54°C.			

AWOS-3 <b>118.875</b>	DETROIT APP CON <b>132.35 284.0</b>	CLNC DEL <b>121.725</b> (GCO)	UNICOM <b>123.0</b> (CTAF) <b>0</b>
--------------------------	----------------------------------------	----------------------------------	----------------------------------------



3000 HUCCY		VGSi and RNAV glidepath not coincident (VGSi Angle 3.00/TCH 30).		4 NM Holding Pattern	
* LNAV only.		PODEE		BROVI	
* 1.3 NM to RW31		2100		132° → 6000 ← 312° 2800	
RW31		2100		GP 3.00° TCH 40	
1.3		2.2 NM		6.5 NM	
CATEGORY	A	B	C	D	
LPV DA	1143-3/4 200 (200-3/4)				
LNAV/VNAV DA	1410-1 5/8 467 (500-1 5/8)				
LNAV MDA	1400-1	457 (500-1)	1400-1 3/8	457 (500-1 3/8)	
CIRCLING	1400-1 438 (500-1)	1420-1 458 (500-1)	1600-1 3/4 638 (700-1 3/4)	1600-2 638 (700-2)	

EC-1, 07 AUG 2025 to 04 SEP 2025

EC-1, 07 AUG 2025 to 04 SEP 2025