

LOC/DME I-OGO 108.55 Chan 22 (Y)	APP CRS 132°	Rwy Idg TDZE 962 Apt Elev 962
--	------------------------	---

ILS or LOC RWY 13

LIVINGSTON COUNTY SPENCER J HARDY (OZW)

▼

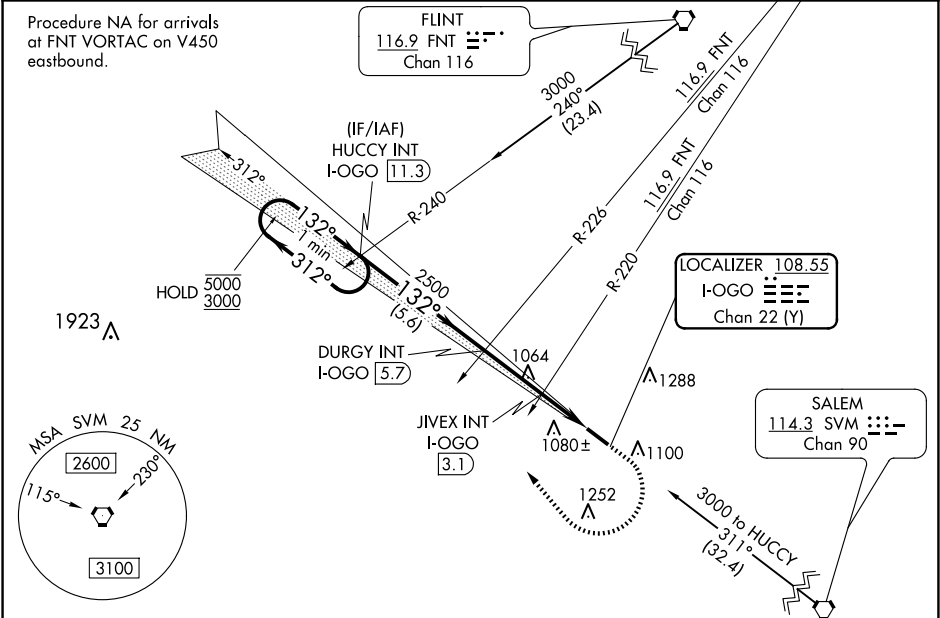
▲ NA

For inop ALS, increase LOC Cat C and D visibility to 1½ SM, and JIVEX fix minimums S-13 Cat C and D visibility to 1 SM.

MALSR

MISSED APPROACH: Climb to 1600 then climbing right turn to 3000 heading 356° and I-OGO NW course to HUCCY INT/ I-OGO 11.3 DME and hold.

AWOS-3 118.875	DETROIT APP CON 132.35 284.0	CLNC DEL 121.725 (GCO)	UNICOM 123.0 (CTAF) 0
--------------------------	--	----------------------------------	---------------------------------



One Minute Holding Pattern		HUCCY INT I-OGO 11.3		ELEV 962		TDZE 962	
5000 ← 312° 3000 → 132°		132°		1600 ↑ 3000 hdg 356° I-OGO NW crs		HUCCY INT	
GS 3.00° TCH 48		2500		JIVEX INT I-OGO 3.1		*LOC only	
		2500		*I-OGO 2		1	
		5.6 NM		2.6 NM		1.1 1.0	
CATEGORY	A	B	C	D			
S-ILS 13	1162-½ 200 (200-½)						
S-LOC 13	1540-½ 578 (600-½)			1540-1¼ 578 (600-1¼)			
CIRCLING	1540-1 578 (600-1)			1600-1¾ 638 (700-1¾)			1600-2 638 (700-2)
JIVEX FIX MINIMUMS (DUAL VOR RECEIVERS OR DME REQUIRED)							
S-LOC 13	1320-½ 358 (400-½)			1320-⅝ 358 (400-⅝)			
CIRCLING	1400-1 438 (500-1)		1420-1 458 (500-1)		1600-1¾ 638 (700-1¾)		1600-2 638 (700-2)
HIRL Rwy 13-31 REIL Rwy 31							
FAF to MAP 4.7 NM							
Knots	60	90	120	150	180		
Min:Sec	4:42	3:08	2:21	1:53	1:34		