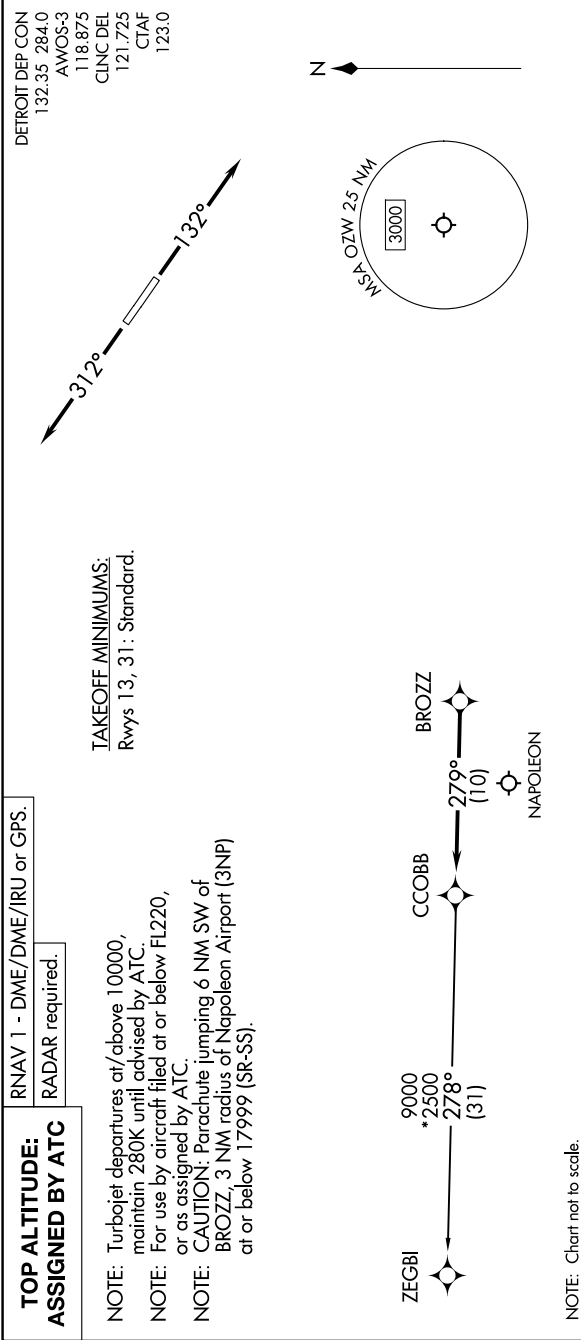


EC-1, 07 AUG 2025 to 04 SEP 2025



DEPARTURE ROUTE DESCRIPTION

TAKEOFF RUNWAY 13: Climb on heading 132° or as assigned by ATC, thence....
TAKEOFF RUNWAY 31: Climb on heading 312° or as assigned by ATC, thence....
....for RADAR vectors to BROZZ, then on track 279° to CCOBB, then on (transition).
Maintain ATC assigned altitude, expect filed altitude 10 minutes after departure.

ZEGBI TRANSITION (CCOBB3.ZEGBI):

EC-1, 07 AUG 2025 to 04 SEP 2025