

WAAS CH 50134 W28A	APP CRS 281°	Rwy Idg TDZE Apt Elev	5000 1184 1184
--	------------------------	-----------------------------	---

RNAV (GPS) RWY 28

HILLSDALE MUNI (JYM)

RNP APCH.		MISSED APPROACH: Climb to 1700 then climbing left turn to 3100 direct HIRED and hold.
▼ Rwy 28 helicopter visibility reduction below ¾ SM NA. For uncompensated Baro-VNAV systems, LNAV/VNAV NA below -17°C or above 54°C.		
AWOS-3 121.025	TOLEDO APP CON 134.35 317.55	UNICOM 122.8 (CTAF) 0

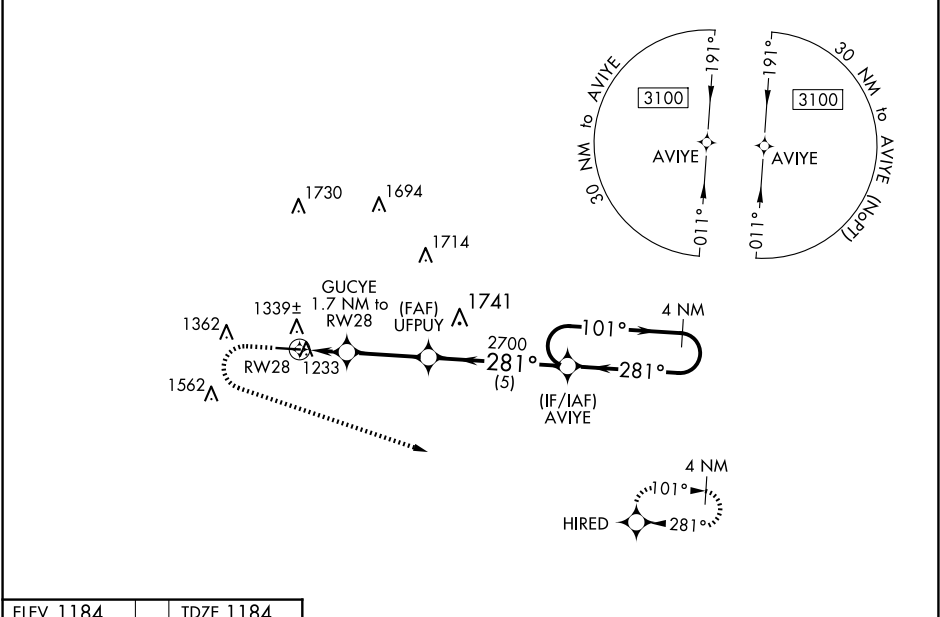


Diagram of RWY 28 showing a 0.6% UP slope, 5000 X 100 dimensions, and a 281° heading. The diagram includes a runway layout with a star symbol and a 281° heading indicator.

REIL Rwy 10 and 28
HIRL Rwy 10-28

		1700 ↑		3100 ↖		HIRED ✦		UFPUY 2700		AVIYE 4 NM Holding Pattern	
		*LNAV only		GUCYE 1.7 NM to RW28							
		RW28		*1.1 NM to RW28		1760*		281°		101° → ← 281° 3100	
								2700		GP 3.00° TCH 40	
		1.1		0.6		2.9 NM		5 NM			
CATEGORY		A		B		C		D			
LPV DA		1474-1		290 (300-1)				NA			
LNAV/VNAV DA		1489-1		305 (400-1)				NA			
LNAV MDA		1580-1		396 (400-1)		1580-1 ¹ / ₈ 396 (400-1 ¹ / ₈)		NA			
CIRCLING		1640-1 456 (500-1)		1680-1 496 (500-1)		1680-1 ¹ / ₂ 496 (500-1 ¹ / ₂)		NA			