

WAAS
CH **57913**
W33A

APP CRS
330°

Rwy Ldg
TDZE **831**
Apt Elev **833**

RNAV (GPS) RWY 33

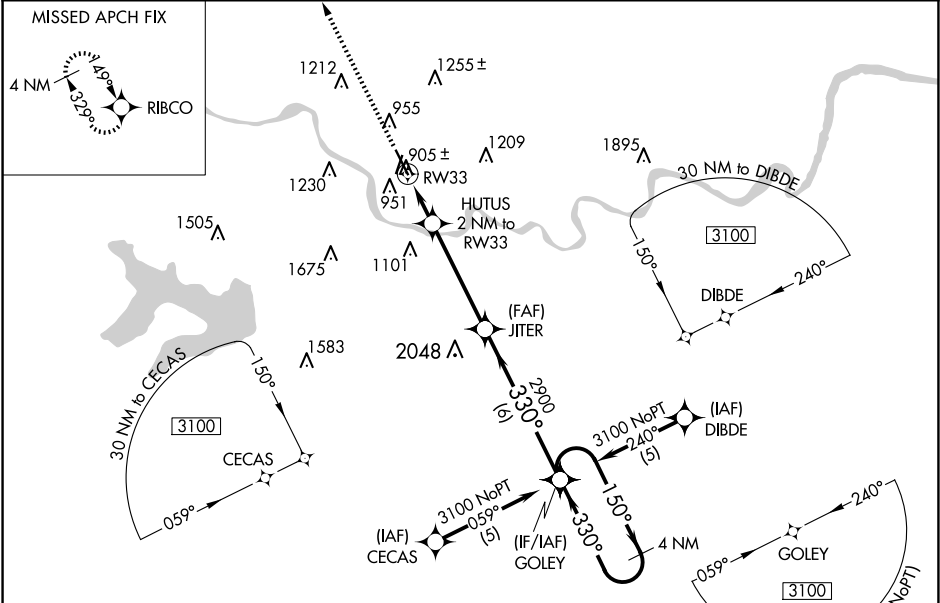
LAWRENCE RGNL (LWC)

⚠ For uncompensated Baro-VNAV systems, LNAV/VNAV NA below -16°C (4°F) or above 54°C (130°F). DME/DME RNP-0.3 NA. When local altimeter setting not received, use Philip Billard Muni altimeter setting and increase LPV DA to 1083 feet, increase LNAV/VNAV DA to 1252 feet and all visibilities ¼ SM; increase all MDAs 60 feet and visibility Cat C ¼ SM. Baro-VNAV and VDP NA when using Philip Billard Muni altimeter setting.

MALSR

MISSED APPROACH:
Climb to 2700 direct
RIBCO and hold.

ASOS 121.225	KANSAS CITY CENTER 123.8 343.7	CLNC DEL 121.825	UNICOM 123.0 (CTAF) 1
------------------------	--	----------------------------	---------------------------------



ELEV **833** TDZE **831**

REIL Rwy's 1, 15, and 19 1
MIRL Rwy's 1-19 and 15-33 1

2700 RIBCO

VGSI and RNAV glidepath not coincident
(VGSI Angle 3.00/TCH 56).

*LNAV only

CATEGORY	A	B	C	D
LPV DA	1031-½	200 (200-½)		NA
LNAV/VNAV DA	1200-¾	369 (400-¾)		NA
LNAV MDA	1220-½	389 (400-½)		NA
CIRCLING	1420-1 587 (600-1)	1480-1 647 (700-1)	1620-2¼ 787 (800-2¼)	NA