

WAAS CH <b>61231</b> <b>W36A</b>	APP CRS <b>002°</b>	Rwy Idg TDZE <b>648</b> Apt Elev <b>686</b>
--	------------------------	---

RNAV (GPS) RWY 36

THOMAS C RUSSELL FLD (ALX)

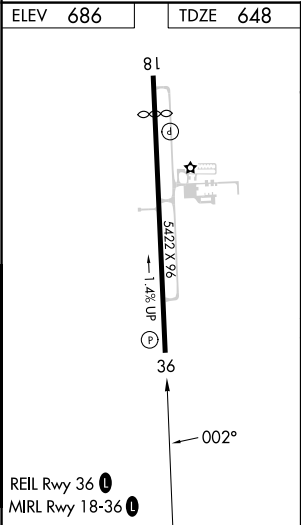
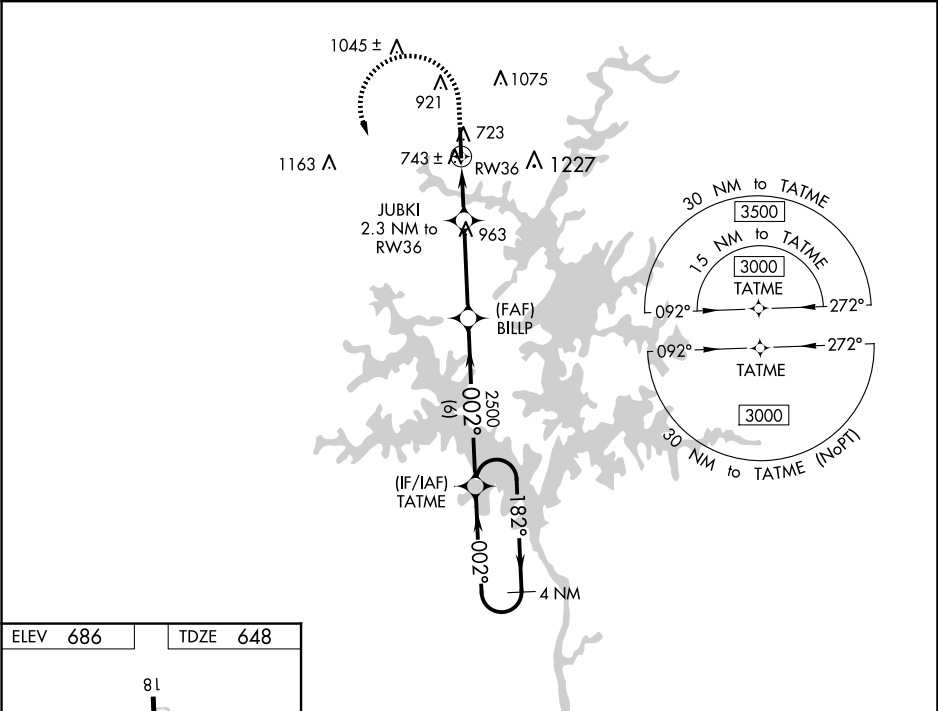
⚠

⚠

For uncompensated Baro-VNAV systems, LNAV/VNAV NA below -16°C (4°F) or above 54°C (130°F). DME/DME RNP-0.3 NA.

MISSED APPROACH: Climb to 1100 then climbing left turn to 3000 direct TATME and hold.

AWOS-3PT <b>118.325</b>	MONTGOMERY APP CON ★ <b>121.2 269.05</b>	UNICOM <b>122.7 (CTAF) ①</b>
----------------------------	---	---------------------------------



1100	3000	TATME	VGSI and RNAV glidepath not coincident (VGSI Angle 3.00/TCH 50).	
*LNAV only.		JUBKI 2.3 NM to RW36	BILLP 2500	TATME 4 NM Holding Pattern
*1.1 NM to RW36		1380*	2500	GP 3.00° TCH 50
1.1 1.2 3.5 NM 6 NM				
CATEGORY	A	B	C	D
LPV DA	898-1		250 (300-1)	
LNAV/VNAV DA	940-1½		292 (300-1½)	
LNAV MDA	1000-1 352 (400-1)		1000-1½ 352 (400-1½)	
Ⓢ CIRCLING	1180-1 494 (500-1)	1240-1 554 (600-1)	1540-2½ 854 (900-2½)	1540-2¾ 854 (900-2¾)