

WAAS
CH **90534**
W18A

APP CRS
182°

Rwy ldg **4799**
TDZE **675**
Apt Elev **686**

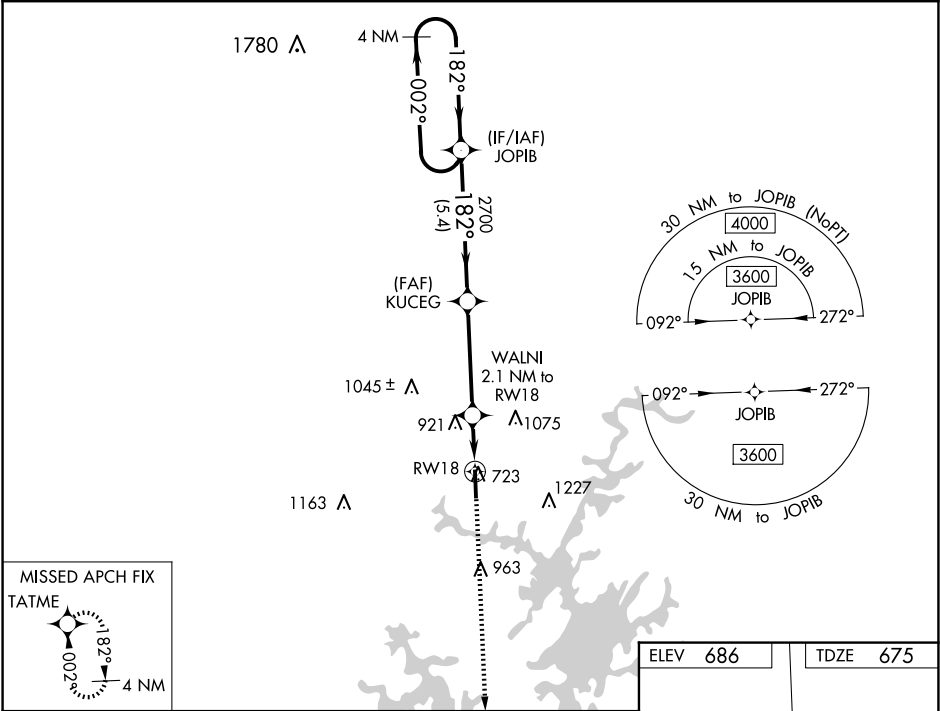
RNAV (GPS) RWY 18
THOMAS C RUSSELL FLD (ALX)

⚠

For uncompensated Baro-VNAV systems, LNAV/VNAV NA below -16°C (4°F) or above 54°C (130°F). Rwy 18 helicopter visibility reduction below 1 SM NA. DME/DME RNP-0.3 NA.

MISSED APPROACH: Climb to 3000 direct TATME and hold.

AWOS-3PT 118.325	MONTGOMERY APP CON ★ 121.2 269.05	UNICOM 122.7 (CTAF) ①
----------------------------	---	---------------------------------



4 NM Holding Pattern JOIB

3600 ←002° 182°→

GP 3.00° TCH 57

KUCEG 2700

WALNI 2.1 NM to RW18

*LNAV only.

2700

*1400

5.4 NM

4.1 NM

2.1 NM

3000 TATME

182°

81

5422 X 96

36

1.43 UP

CATEGORY	A	B	C	D
LPV DA		1061-1¼	386 (400-1¼)	
LNAV/ VNAV DA		1214-1¾	539 (600-1¾)	
LNAV MDA	1160-1	485 (500-1)	1160-1¾	485 (500-1¾)
Ⓢ CIRCLING	1180-1 494 (500-1)	1240-1 554 (600-1)	1540-2½ 854 (900-2½)	1540-2¾ 854 (900-2¾)

REIL Rwy 36 ①
MIRL Rwy 18-36 ①