

WAAS CH 86743 W31A	APP CRS 305°	Rwy Ldg TDZE 2120 Apt Elev 2120
--	------------------------	---

RNAV (GPS) RWY 31

VIRGINIA TECH/MONTGOMERY EXEC (BCB)

RNP APCH.

▼

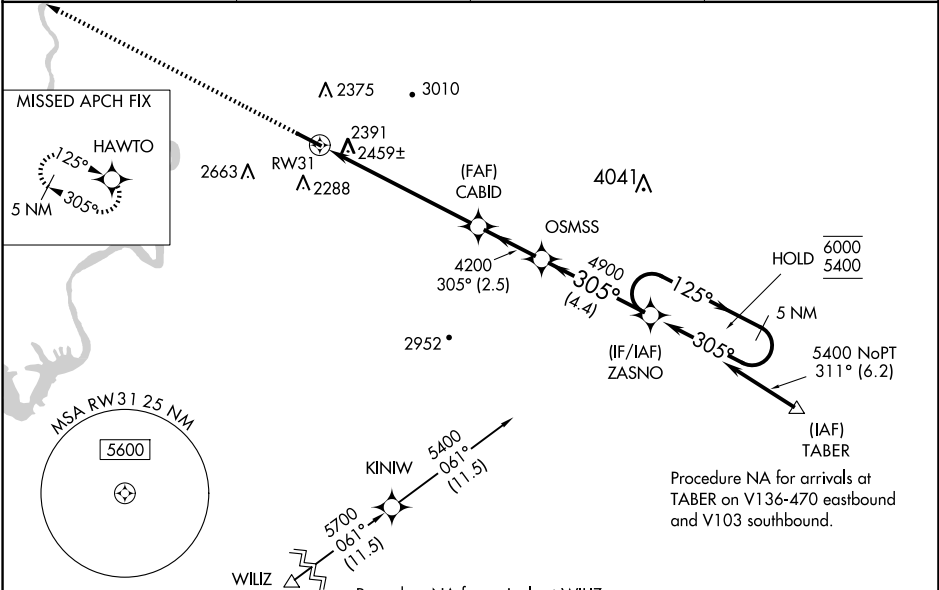
▲

Rwy 31 helicopter visibility reduction below ¾ SM NA.

For uncompensated Baro-VNAV systems, LNAV/VNAV NA below -19°C or above 54°C.

MISSED APPROACH: Climb to 5900 direct HAWTO and hold, continue climb-in-hold to 5900.

AWOS-3 133.325	ROANOKE APP CON 126.9 339.8	CLNC DEL 124.85	UNICOM 123.05 (CTAF) 0
--------------------------	---------------------------------------	---------------------------	----------------------------------



ELEV 2120	TDZE 2120
-----------	-----------

5900

HAWTO

*LNAV only.

*1.8 NM to RW31

CABID 4200

OSMSS 4900

ZASNO

5 NM Holding Pattern

125°

305°

6000

5400

GP 3.00°

TCH 50

CATEGORY	A	B	C	D
LPV DA	2412-7/8	292 (300-7/8)		NA
LNAV/VNAV DA	2740-13/4	620 (700-13/4)		NA
LNAV MDA	2740-1	620 (700-1)	2740-13/4 620 (700-13/4)	NA
CIRCLING	2760-1 640 (700-1)	2820-1 700 (700-1)	2980-21/2 860 (900-21/2)	NA

REIL Rwy 31 0

MIRL Rwy 13-31 0