

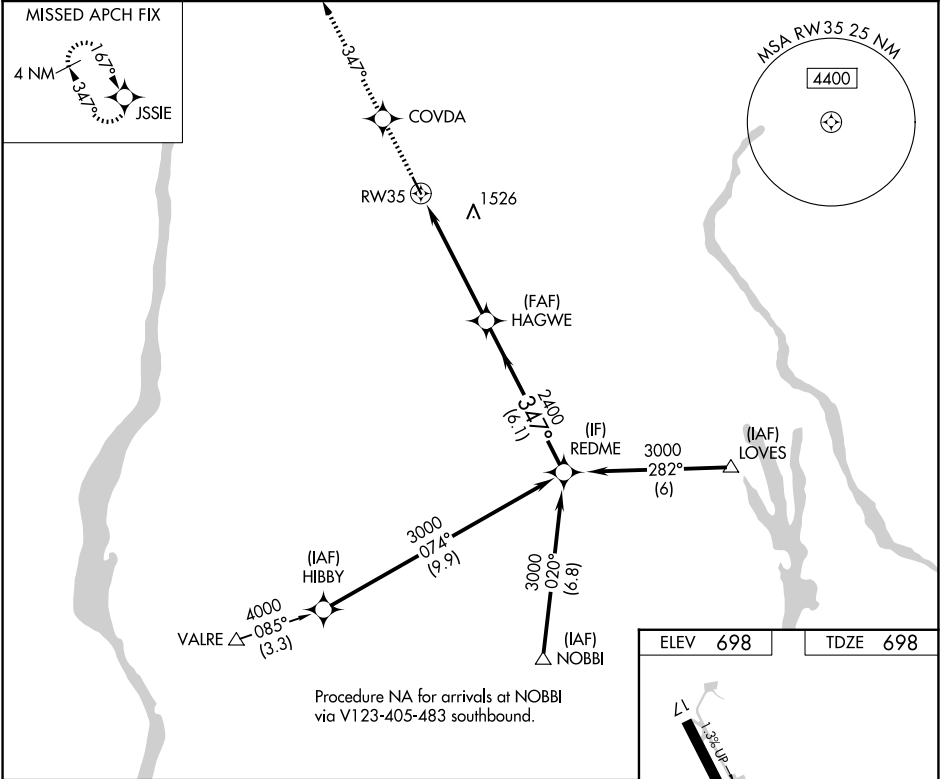
WAAS CH 86308 W35A	APP CRS 347°	Rwy Idg TDZE 698 Apt Elev 698	3828
--	------------------------	---	-------------

RNAV (GPS) RWY 35

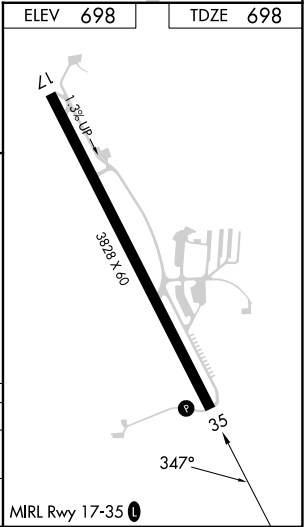
SKY ACRES (44N)

RNP APCH.	MISSED APPROACH: Climb to 3000 direct COVDA and via 347° track to JSSIE and hold.
NA -22°C	Use Newburgh altimeter setting; when not received use Poughkeepsie altimeter setting and increase LPV DA to 1063, and all MDA 20 feet.

SWF ASOS 124.575	POU ASOS 126.75	NEW YORK APP CON 132.75 363.1	UNICOM 122.8 (CTAF) 0
----------------------------	---------------------------	---	---------------------------------



3000	COVDA	tr 347°	JSSIE	VGSI and RNAV glidepath not coincident (VGSI Angle 3.00/TCH 33).	REDME	Procedure Turn NA
HAGWE					3000	
					2400	
					5.2 NM	6.1 NM
CATEGORY	A	B	C	D		
LPV DA	1046-1¼	348 (400-1¼)	NA			
LNNAV MDA	1700-1¼ 1002 (1100-1¼)	1700-1½ 1002 (1100-1½)	NA			



NE-2, 07 AUG 2025 to 04 SEP 2025

NE-2, 07 AUG 2025 to 04 SEP 2025