

LOC I-HUV
109.55

APP CRS
019°

Rwy Idg **6506**
TDZE **300**
Apt Elev **303**

ILS or LOC RWY 2
HEART OF GEORGIA RGNL (EZM)

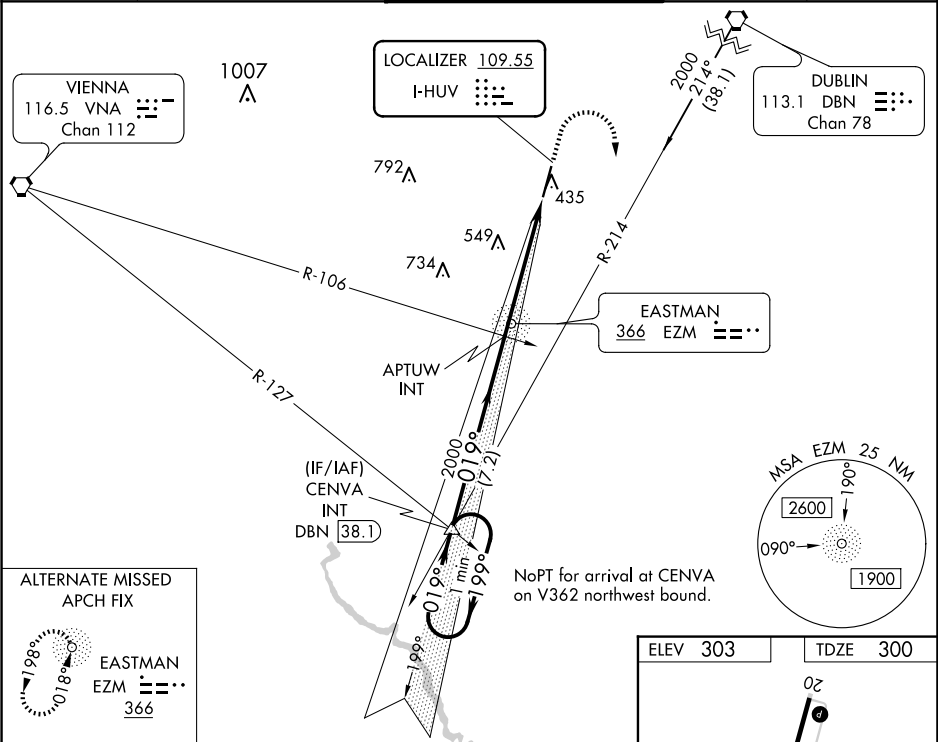
⚠

When local alimeter setting not received, use Dublin alimeter setting and increase all DA 52 feet and all MDA 60 feet; increase S-LOC 2 Cat C/D and Circling Cat C visibility ¼ mile.

MALSR

MISSED APPROACH: Climb to 800 then climbing right turn to 2000 on heading 180° and DBN VORTAC R-214 to CENVA INT and hold.

ATIS 119.425	JACKSONVILLE CENTER 127.575 269.025	HEART OF GEORGIA TOWER ★ 124.55 (CTAF) 0	GND CON 121.175	UNICOM 122.95
------------------------	---	--	---------------------------	-------------------------



	ELEV 303	TDZE 300
	019° 5.2 NM from FAF HIRL Rwy 2-20 REIL Rwy 20	
	FAF to MAP 5.2 NM	
	Knots	60 90 120 150 180
	Min:Sec	5:12 3:28 2:36 2:05 1:44
CATEGORY	A	B
S-ILS 2	500-½	200 (200-½)
S-LOC 2	820-½ 520 (600-½)	820-1 520 (600-1)
CIRCLING	820-1 517 (600-1)	900-1½ 597 (600-½) 900-2 597 (600-2)