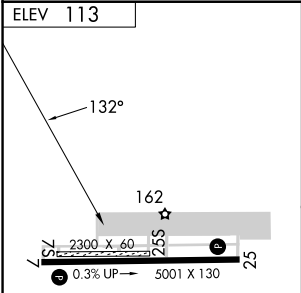
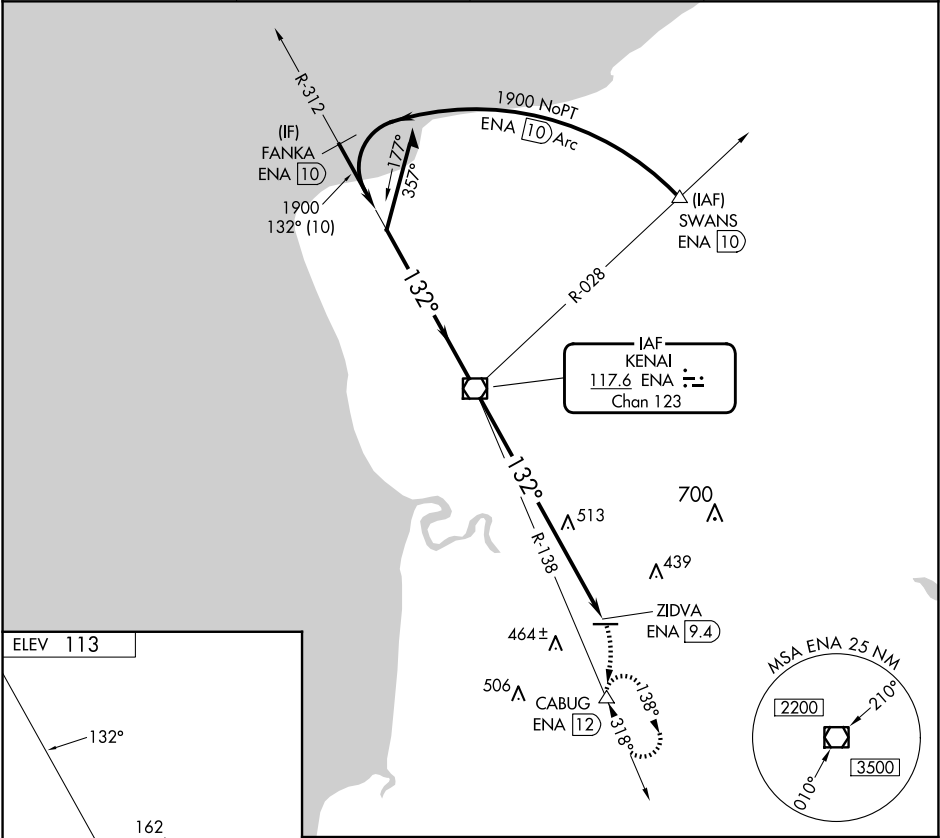


VOR/DME ENA <b>117.6</b> Chan <b>123</b>	APP CRS <b>132°</b>	Rwy Idg TDZE Apt Elev <b>N/A</b> <b>N/A</b> <b>113</b>
--	------------------------	---

VOR-A  
SOLDOTNA (SXQ)(PASX)

DME required.	MISSED APPROACH: Climbing right turn to 3700 on heading 184° and on ENA R-138 to CABUG/ENA 12 DME and hold, continue climb-in-hold to 3700.
Circling NA to Rwys 7S and 25S. Circling Rwy 7 NA at night.	

AWOS-3P <b>135.45</b>	ANCHORAGE CENTER <b>125.7 379.1</b>	KENAI RADIO <b>122.35</b>	CTAF <b>122.5 0</b>
--------------------------	--	------------------------------	------------------------



Remain within 10 NM	ENA VOR/DME 6000	3700 hdg 184°	ENA R-138	CABUG
1900	132°	1900	ZIDVA ENA 9.4	
9.4 NM				
CATEGORY	A	B	C	D
CIRCLING	1020-1¼ 907 (1000-1¼)		1020-2¾ 907 (1000-2¾)	1020-3 907 (1000-3)