

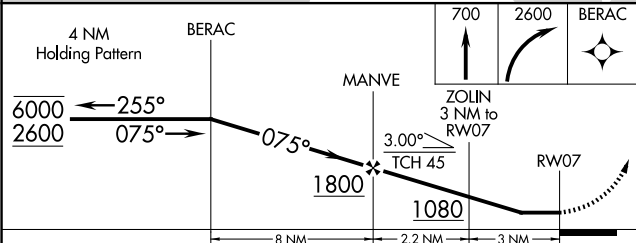
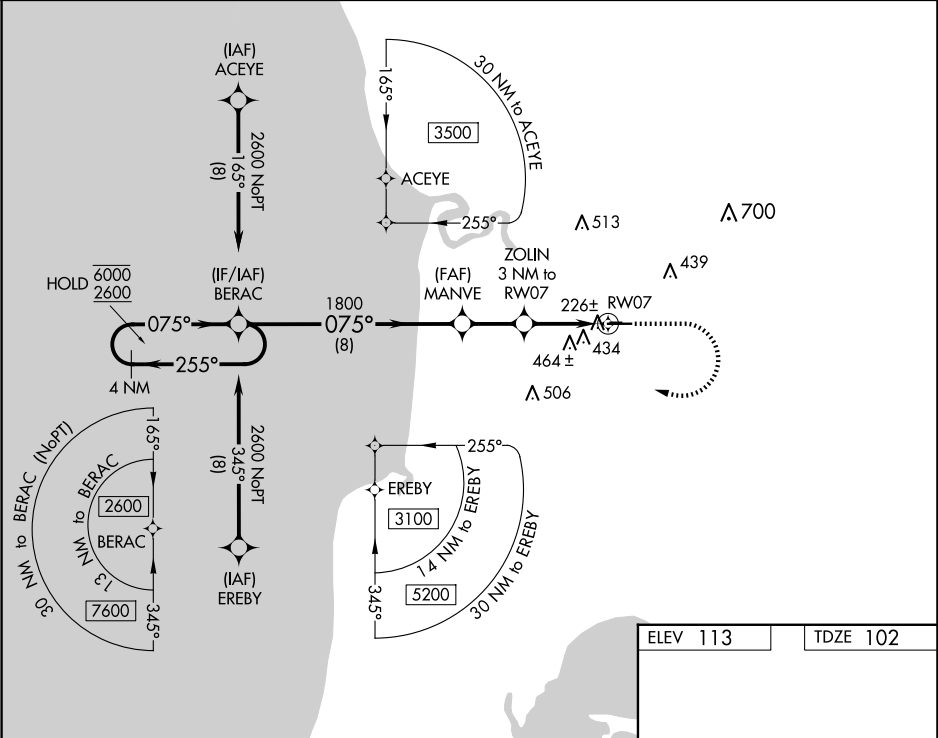
WAAS CH 45942 W07A	APP CRS 075°	Rwy Idg TDZE Apt Elev	5001 102 113
--	------------------------	-----------------------------	---

RNAV (GPS) RWY 7

SOLDOTNA (SXQ)(PASX)

RNP APCH - GPS.	MISSED APPROACH: Climb to 700 then climbing right turn to 2600 direct BERAC and hold.
▼ ▲ Circling NA to Rwy 7S and 25S. Rwy 7 helicopter visibility reduction below 1 SM NA. Rwy 7 Straight-In and Circling minimums NA at night.	

AWOS-3P 135.45	ANCHORAGE CENTER 125.7 379.1	KENAI RADIO 122.35	CTAF 122.5 0
--------------------------	--	------------------------------	------------------------



ELEV 113	TDZE 102
MRL Rwy 7-25 0	