

SOLDOTNA, ALASKA

AL-5464 (FAA)

24361

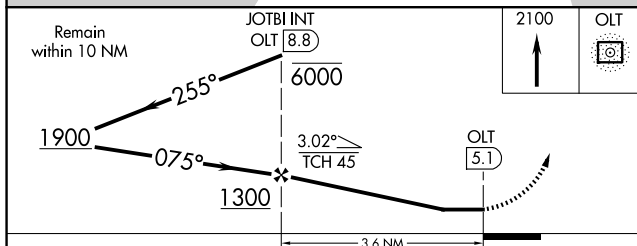
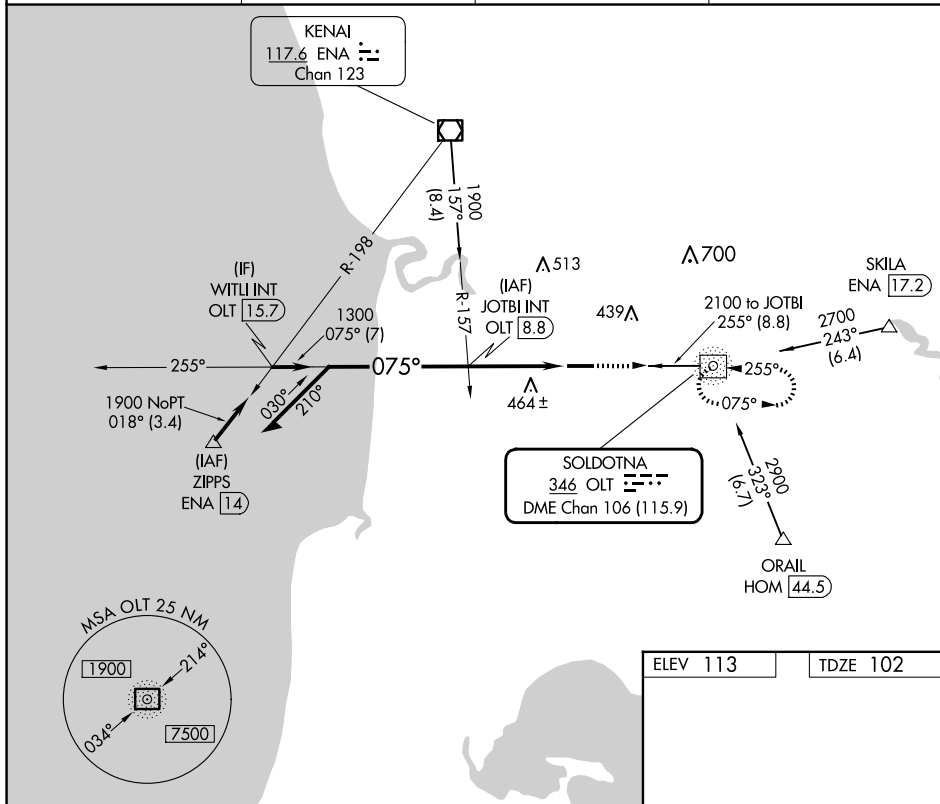
NDB/DME OLT <b>346</b> Chan <b>106 (115.9)</b>	APP CRS <b>075°</b>	Rwy Idg <b>5001</b> TDZE <b>102</b> Apt Elev <b>113</b>
--	------------------------	---


NDB RWY 7  
SOLDOTNA (SXQ)(PASX)

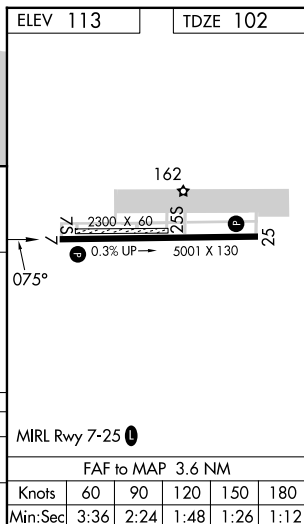
**T** Circling NA to Rwy 7S and 25S. Straight-in Rwy 7 NA at night,  
**A** Circling Rwy 7 NA at night. Rwy 7 helicopter visibility reduction  
below 1 SM NA.

MISSED APPROACH: Climb to 2100 direct  
OLT NDB/DME and hold.

AWOS-3P <b>135.45</b>	ANCHORAGE CENTER <b>125.7 379.1</b>	KENAI RADIO <b>122.35</b>	CTAF <b>122.5 ①</b>
--------------------------	--	------------------------------	------------------------



CATEGORY	A	B	C	D
S-7	860-1 758 (800-1)	860-1¼ 758 (800-1¼)	860-2½ 758 (800-2½)	
 CIRCLING	860-1 747 (800-1)	860-1¼ 747 (800-1¼)	860-2½ 747 (800-2½)	980-2¾ 867 (900-2¾)



SOLDOTNA, ALASKA

Amdt 2F 20JUN19

SOLDOTNA (SXQ)(PASX)

NDB RWY 7

60°29'N-151°02'W

AK, 07 AUG 2025 to 02 OCT 2025

AK, 07 AUG 2025 to 02 OCT 2025