

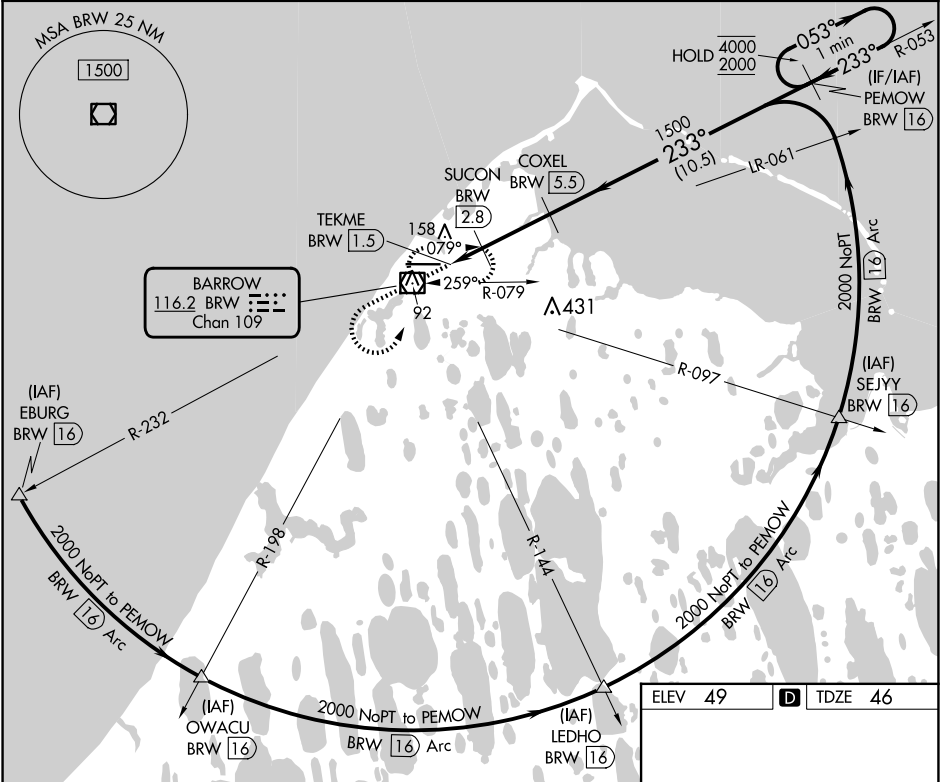
VOR/DME BRW	APP CRS	Rwy Idg	5900
116.2	233°	TDZE	46
Chan 109		Apt Elev	49

VOR RWY 26

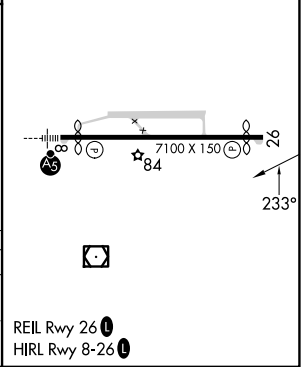
WILEY POST-WILL ROGERS MEML (BRW)(PABR)

DME required.	MISSED APPROACH: Climb to 1600 then climbing left turn to 2000 direct BRW VOR/DME and hold, continue climb-in-hold to 2000.
<div>⚠</div> <div>⚠</div>	Circling NA for Cat A north of Rwy 8-26.

AFIS 132.15	ANCHORAGE CENTER 135.3 239.25	BARROW RADIO 123.6 (CTAF) 0
----------------	----------------------------------	--------------------------------



1600	2000	BRW		
↑	↶	☐		
TEKME BRW 1.5	SUCON BRW 2.8	COXEL BRW 5.5	PEMOW BRW 16	One Minute Holding Pattern
0.4	0.6	0.7	2.7 NM	10.5 NM
540	1500	233°	053°	4000 2000
3.01°	TCH 50			
CATEGORY	A	B	C	D
S-26	420-1	374 (400-1)		
CIRCLING	420-1 371 (400-1)	500-1 451 (500-1)	500-1½ 451 (500-1½)	680-2 631 (700-2)



VOR RWY 26

AK, 07 AUG 2025 to 02 OCT 2025

AK, 07 AUG 2025 to 02 OCT 2025