

HOUSTON, TEXAS

AL-5461 (FAA)

24305

WAAS CH <b>69626</b> <b>W27A</b>	APP CRS <b>267°</b>	Rwy Idg <b>10000</b> TDZE <b>86</b> Apt Elev <b>96</b>
--	------------------------	--

RNAV (GPS) Z RWY 27  
GEORGE BUSH INTCNL/HOUSTON (IAH)

RNP APCH.

**V** Simultaneous approach authorized. LNAV procedure NA during simultaneous operations. Use of FD or AP required during simultaneous operations. For uncompensated Baro-VNAV systems, LNAV/VNAV NA below -2°C or above 54°C. For inop ALS, increase LPV Cat E visibility to RVR 4000, LNAV/VNAV Cat E visibility to RVR 6000, and LNAV Cats C, D and E visibility to 1% SM.

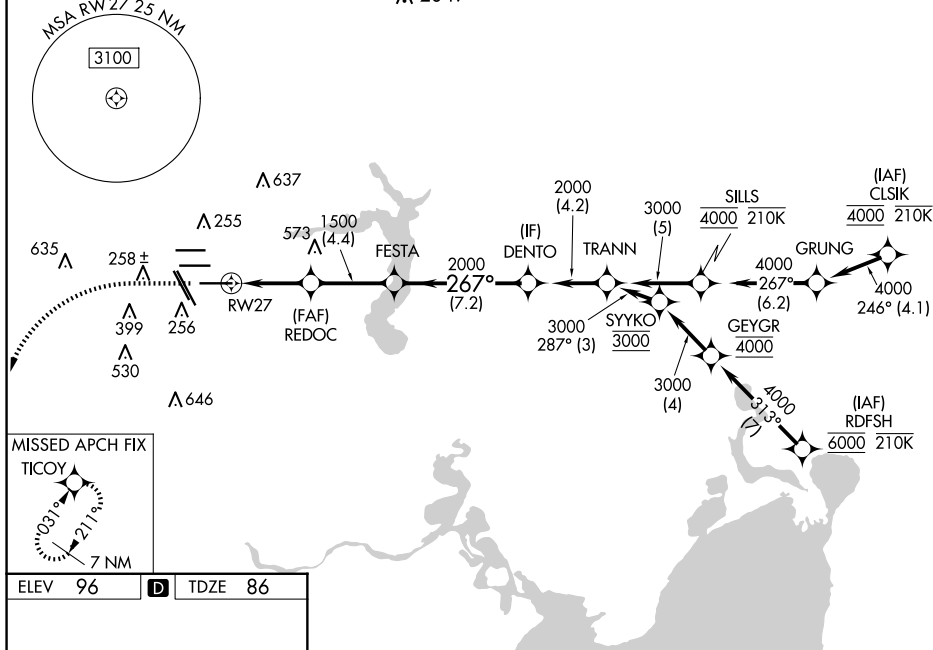
ALSF-2



**MISSED APPROACH:** Climb to 560 then climbing left turn to 3100 direct TICOY and hold.

D-ATIS <b>124.05</b>	HOUSTON APP CON <b>120.05 379.1</b> EAST <b>124.35 316.15</b> WEST	HOUSTON TOWER <b>135.15 290.2</b>	GND CON <b>118.575</b>	CLNC DEL <b>128.1</b>	CPDLC
-------------------------	--	--------------------------------------	---------------------------	--------------------------	-------

A 2049



TDZ/CL Rwy's 8R, 8L, 15R, 26R, 26L,  
27 and 33L  
HIRL all Rwy's

VGSi and RNAV glidepath not coincident (VGSi Angle 3.00/TCH 70).

\*RNAV only.

REDOC 1500

\*1.3 NM to RW27

RW27

1.3

3 NM

4.4 NM

7.2 NM

4.2 NM

FESTA 2000

DENTO 2000

267°

TRANN 3000

GP 3.00°

TCH 55'

CATEGORY	A	B	C	D	E
LPV DA		286/18	200 (200-1/2)		
RNAV/VNAV DA		476/35	390 (400-5/8)		
RNAV MDA	560/24	474 (500-1/2)	560/50	474 (500-1)	

HOUSTON, TEXAS  
Amdt 5B 22APR21

GEORGE BUSH INTCNTL/HOUSTON (IAH)

29°59'N-95°20'W

## RNAV (GPS) Z RWY 27

SC-5, 07 AUG 2025 to 04 SEP 2025