

|  |                        |   |
|--|------------------------|---|
| WAAS<br>CH <b>97726</b><br><b>W26A</b> | APP CRS<br><b>267°</b> | Rwy Idg <b>9000</b><br>TDZE <b>96</b><br>Apt Elev <b>96</b> |
|--|------------------------|---|

# RNAV (GPS) Z RWY 26R

## GEORGE BUSH INTCNL/HOUSTON (IAH)

▼ For uncompensated Baro-VNAV systems, LNAV/VNAV NA below -3°C (27°F) or above 54°C (130°F). For inop ALSF, increase LPV Cat E visibility to RVR 4000, LNAV/VNAV all Cts visibility to 1/4, and LNAV Cat C/D/E visibility to 1/2. DME/DME RNP-0.3 NA. Simultaneous approach authorized with Rwy 26L and Rwy 27. LNAV procedure NA during simultaneous operations. Use of FD or AP providing RNAV track guidance required during simultaneous operations.

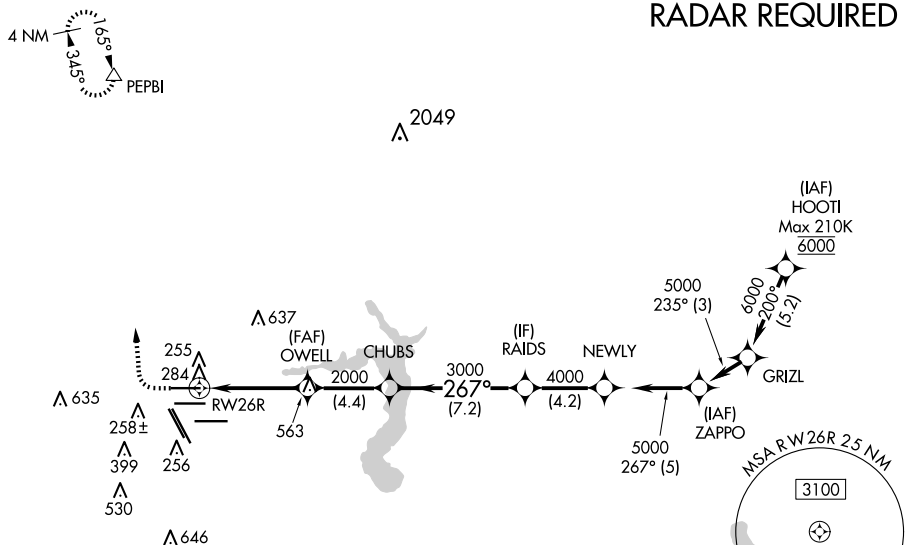
ALSF-2



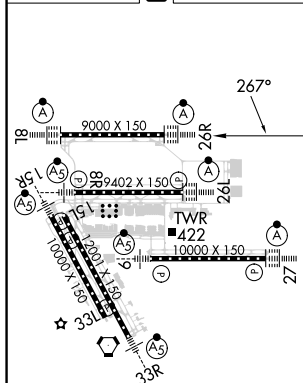
**MISSED APPROACH:** Climb to 600 then climbing right turn to 3000 direct PEPBI and hold.

|                         |  |                                      |                         |                          |       |
|-------------------------|--|--------------------------------------|-------------------------|--------------------------|-------|
| D-ATIS<br><b>124.05</b> | HOUSTON APP CON<br><b>120.05 379.1</b> EAST<br><b>124.35 316.15</b> WEST | HOUSTON TOWER<br><b>120.72 290.2</b> | GND CON<br><b>121.7</b> | CLNC DEL<br><b>128.1</b> | CPDLC |
|-------------------------|--|--------------------------------------|-------------------------|--------------------------|-------|

## RADAR REQUIRED



|         |          |         |
|---------|----------|---------|
| ELEV 96 | <b>D</b> | TDZE 96 |
|---------|----------|---------|



TDZ/CL Rwy's 8R, 8L, 15R, 26R, 26L,  
27 and 33L  
HRL qll Rwy's

