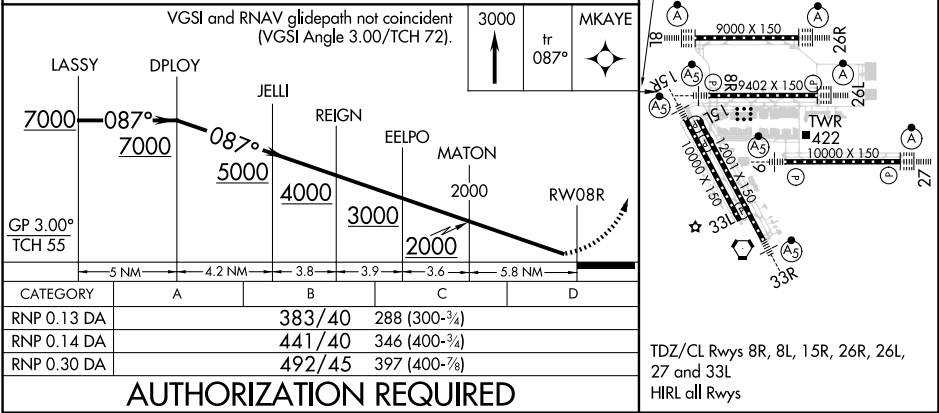
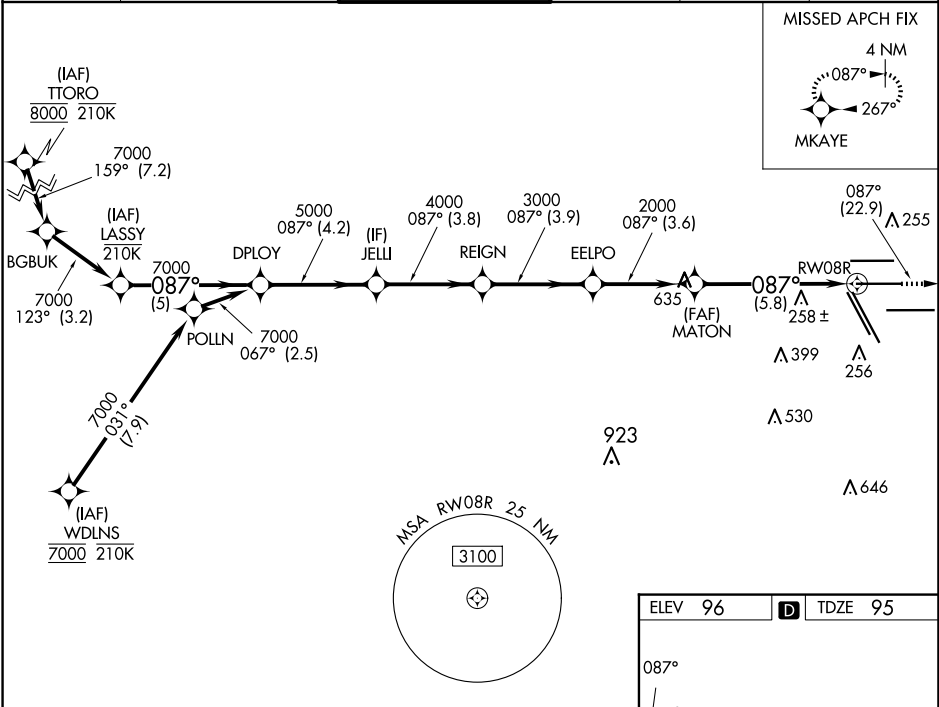


APP CRS	Rwy Idg	9402
087°	TDZE	95
	Apt Elev	96

RNAV (RNP) Y RWY 8R
GEORGE BUSH INTCNL/HOUSTON (IAH)

RNP AR APCH.	MALSR	MISSED APPROACH: Climb to 3000 on track 087° to MKAYE and hold.
For uncompensated Baro-VNAV systems, procedure NA below -3°C or above 54°C. For inop ALS increase RNP 0.13 all Cats visibility to RVR 4500, RNP 0.14 all Cats visibility to RVR 5600, RNP 0.30 all Cats visibility to 1¼ SM. Simultaneous approach authorized.		

D-ATIS	HOUSTON APP CON	HOUSTON TOWER	GND CON	CLNC DEL	CPDLC
124.05	120.05 379.1 EAST 124.35 316.15 WEST	125.35 290.2	118.575	128.1	



SC-5, 07 AUG 2025 to 04 SEP 2025

SC-5, 07 AUG 2025 to 04 SEP 2025