

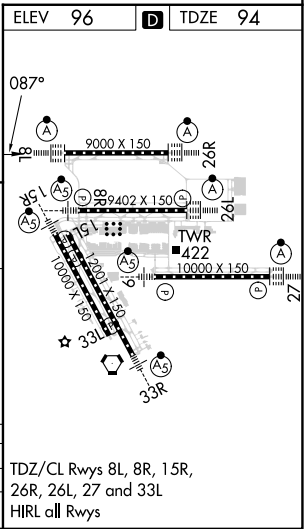
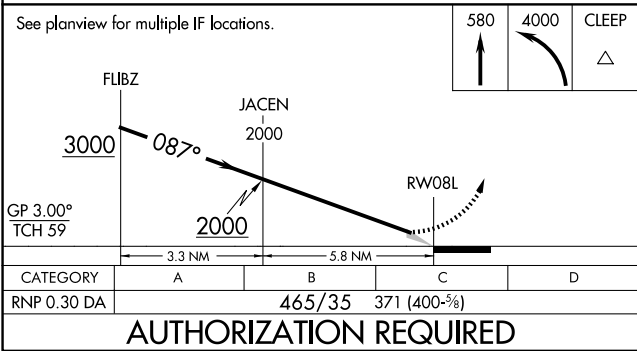
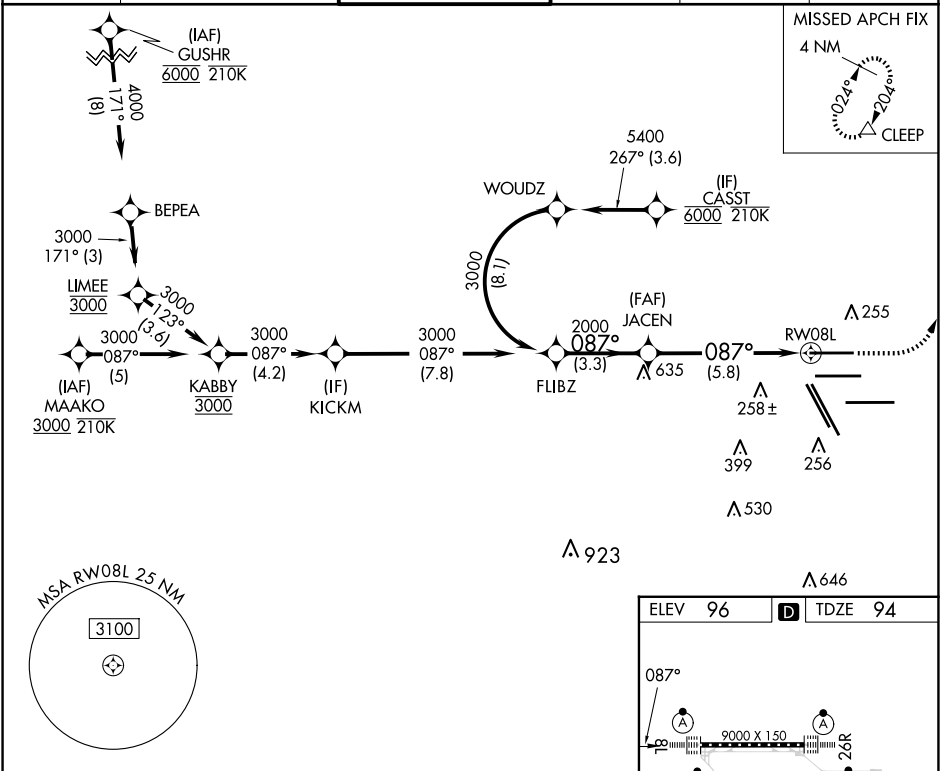
APP CRS	Rwy Idg	9000
087°	TDZE	94
	Apt Elev	96

RNAV (RNP) Y RWY 8L

GEORGE BUSH INTCNL/HOUSTON (IAH)

RNP AR APCH-GPS.	ALSF-2	MISSED APPROACH: Climb to 580 then climbing left turn to 4000 direct CLEEP and hold.
Simultaneous approach authorized. For uncompensated Baro-VNAV systems, procedure NA below -2°C or above 54°C. Use of FD or AP providing RNAV track guidance required during simultaneous operations. For inop ALS, increase RNP 0.30 all Cats visibility to RVR 5500.		

D-ATIS	HOUSTON APP CON	HOUSTON TOWER	GND CON	CLNC DEL	CPDLC
124.05	120.05 379.1 EAST 124.35 316.15 WEST	120.72 290.2	121.7	128.1	



SC-5, 07 AUG 2025 to 04 SEP 2025

SC-5, 07 AUG 2025 to 04 SEP 2025