

APP CRS <b>267°</b>	Rwy Idg TDZE Apt Elev	<b>9000</b> <b>96</b> <b>96</b>
------------------------	-----------------------------	---------------------------------------

RNAV (RNP) Y RWY 26R  
GEORGE BUSH INTCNL/HOUSTON (IAH)

GEORGE BUSH INTCNL/HOUSTON (T A H)

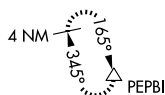
**T** For uncompensated Baro-VNAV systems, procedure NA below -3°C (27°F) or above 54°C (130°F). GPS required. Simultaneous approach authorized. For inop ALS, increase RNP 0.11 all Cats visibility to RVR 5000 and increase RNP 0.15 all Cats visibility to 1¼ Sm. Use of FD or AP providing RNAV track guidance required during simultaneous operations.

ALSF-2

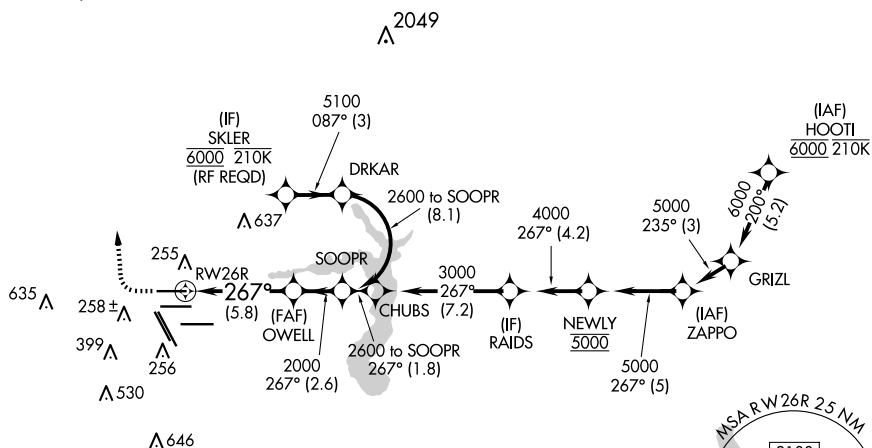


**MISSED APPROACH:** Climb to 600 then climbing right turn to 3000 direct PEPBI and hold.

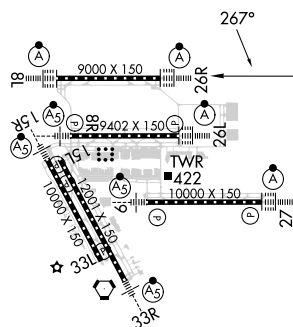
D-ATIS <b>124.05</b>	HOUSTON APP CON <b>120.05 379.1</b> EAST <b>124.35 316.15</b> WEST	HOUSTON TOWER <b>120.72 290.2</b>	GND CON <b>121.7</b>	CLNC DEL <b>128.1</b>	CPDLC
-------------------------	--	--------------------------------------	-------------------------	--------------------------	-------



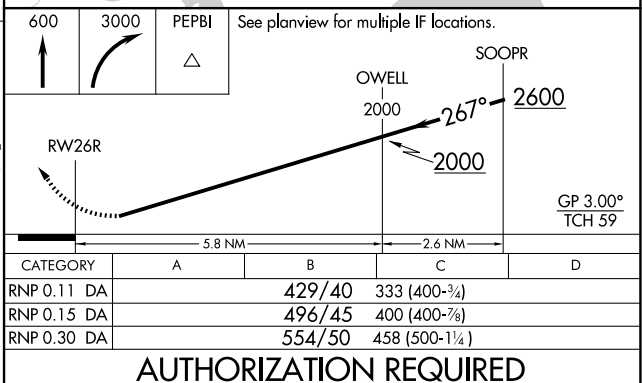
## RADAR REQUIRED



ELEV 96	<b>D</b>	TDZE 96
---------	----------	---------



TDZ/CL Rwy 8R, 8L, 15R, 26R, 26L,  
27 and 33L  
HIRL qll Rwy 8



HOUSTON, TEXAS

Orig-D 13SEP18

GEORGE BUSH INTCNL/HOUSTON (TATH)

29°59'N-95°20'W

RNAV (RNP) Y RWY 26R