

WAAS CH 57902 W33A	APP CRS 329°	Rwy 33R Rwy Idg 12001 TDZE 89 Apt Elev 96	Rwy 33L Rwy Idg 10000 TDZE 90 Apt Elev 96
--	------------------------	---	---

RNAV (GPS) RWY 33R

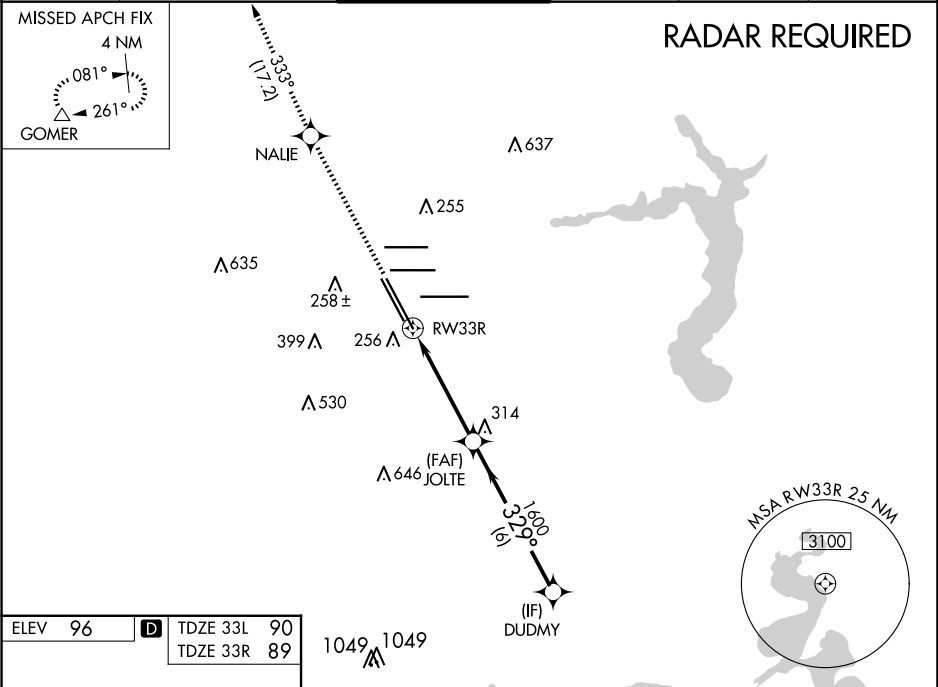
GEORGE BUSH INTCNL/HOUSTON (IAH)

▼ For uncompensated Baro-VNAV systems, LNAV/VNAV NA below -3°C (27°F) or above 54°C (130°F). For inop MALSR, increase LPV Cat E visibility to RVR 4000, LNAV/VNAV Cat E visibility to 1½, and LNAV Cat E visibility to 1½. DME/DME RNP-0.3 NA. ** RVR 1800 authorized with use of FD or AP or HUD to DA.

MALSR

MISSED APPROACH: Climb to 2000 direct NALIE and on track 333° to GOMER and hold.

D-ATIS 124.05	HOUSTON APP CON 120.05 379.1 EAST 124.35 316.15 WEST	HOUSTON TOWER 127.3 288.25	GND CON 121.7	CLNC DEL 128.1	CPDLC
-------------------------	--	--------------------------------------	-------------------------	--------------------------	-------



<p>TDZ/CL Rwy's 8R, 8L, 15R, 26R, 26L, 27 and 33L HIRL all Rwy's</p>	<div><div>2000</div><div>NALIE</div><div>tr 333°</div><div>GOMER</div></div>																														
	<div><div>*LNAV only.</div><div><div>RW33R</div><div>JOLTE</div><div>DUDMY</div></div><div><div>1.3 NM</div><div>3.3 NM</div><div>6 NM</div></div><div><div>1600</div><div>329°</div><div>2000</div></div><div><div>GP 3.00°</div><div>TCH 49</div></div></div>																														
	<table><tr><td>CATEGORY</td><td>A</td><td>B</td><td>C</td><td>D</td><td>E</td></tr><tr><td>LPV DA**</td><td colspan="5">289/24 200 (200-½)</td></tr><tr><td>LNAV/VNAV DA</td><td colspan="5">490/45 401 (400-¾)</td></tr><tr><td>LNAV MDA</td><td>540/24 451 (500-½)</td><td colspan="3">540/45 451 (500-¾)</td><td></td></tr><tr><td>SIDESTEP 33L</td><td>540-1 450 (500-1)</td><td>540-1½ 450 (500-1½)</td><td>540-2 450 (500-2)</td><td colspan="2">NA</td></tr></table>	CATEGORY	A	B	C	D	E	LPV DA**	289/24 200 (200-½)					LNAV/VNAV DA	490/45 401 (400-¾)					LNAV MDA	540/24 451 (500-½)	540/45 451 (500-¾)				SIDESTEP 33L	540-1 450 (500-1)	540-1½ 450 (500-1½)	540-2 450 (500-2)	NA	
	CATEGORY	A	B	C	D	E																									
	LPV DA**	289/24 200 (200-½)																													
LNAV/VNAV DA	490/45 401 (400-¾)																														
LNAV MDA	540/24 451 (500-½)	540/45 451 (500-¾)																													
SIDESTEP 33L	540-1 450 (500-1)	540-1½ 450 (500-1½)	540-2 450 (500-2)	NA																											