

## LEONA FOUR DEPARTURE

AL-5461 (FAA)

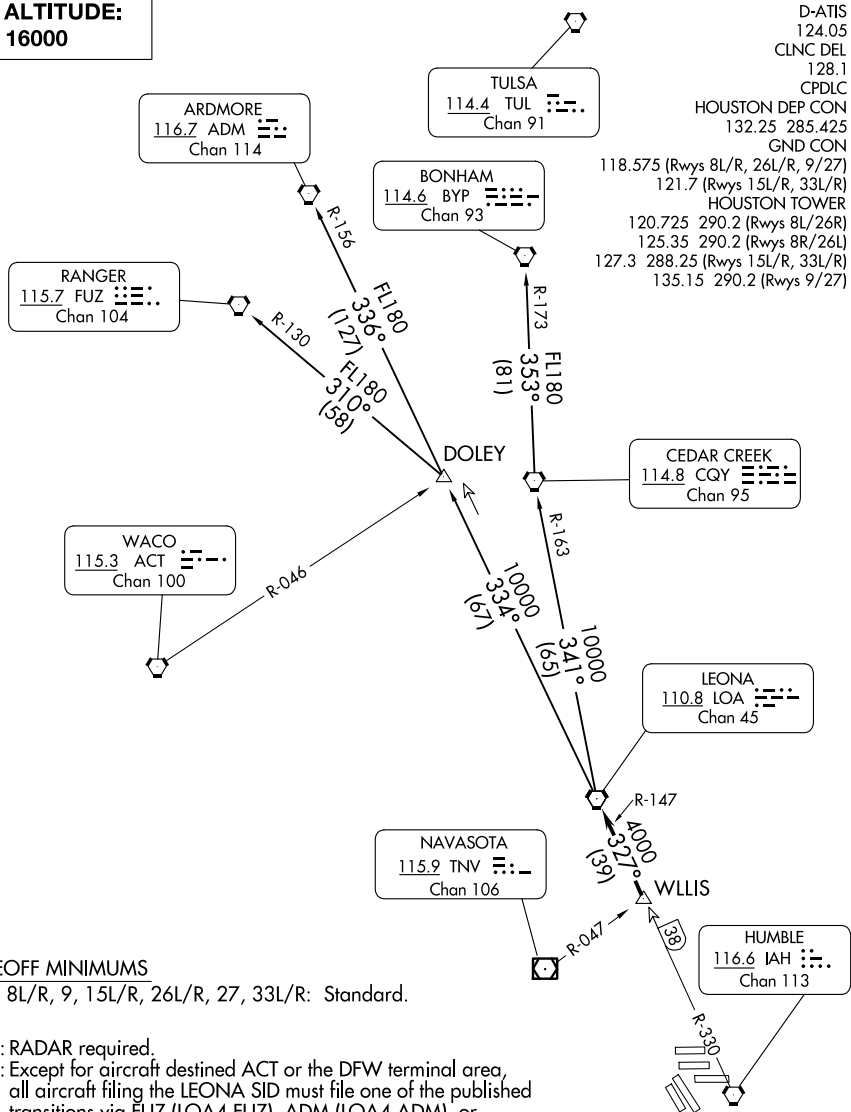
HOUSTON, TEXAS

**TOP ALTITUDE:**  
16000

D-ATIS  
124.05  
CLNC DEL  
128.1  
CPDLC

HOUSTON DEP CON  
132.25 285.425  
GND CON

118.575 (Rwys 8L/R, 26L/R, 9/27)  
121.7 (Rwys 15L/R, 33L/R)  
HOUSTON TOWER  
120.725 290.2 (Rwys 8L/26R)  
125.35 290.2 (Rwys 8R/26L)  
127.3 288.25 (Rwys 15L/R, 33L/R)  
135.15 290.2 (Rwys 9/27)



## TAKEOFF MINIMUMS

Rwys 8L/R, 9, 15L/R, 26L/R, 27, 33L/R: Standard.

NOTE: RADAR required.

NOTE: Except for aircraft destined ACT or the DFW terminal area, all aircraft filing the LEONA SID must file one of the published transitions via FUZ (LOA4.FUZ), ADM (LOA4.ADM), or BYP (LOA4.BYP).

NOTE: RANGER TRANSITION: For aircraft overflying west/northwest of the DFW terminal area FL240 and above.

NOTE: ARDMORE TRANSITION: For aircraft overflying north/northwest of the DFW terminal area FL240 and above.

NOTE: BONHAM TRANSITION: For aircraft overflying/landing TUL  
VORTAC FL240 and above.

NOTE: Chart not to scale.

(CONTINUED ON FOLLOWING PAGE)

## LEONA FOUR DEPARTURE

HOUSTON, TEXAS

GEORGE BUSH INTCNL/HOUSTON (IAH)

(LOA4.LOA) 07OCT21

SC-5, 07 AUG 2025 to 04 SEP 2025