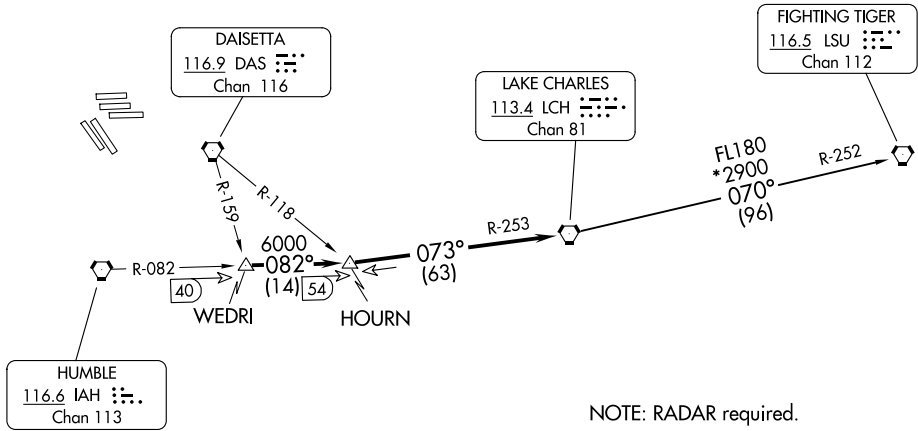


D-ATIS 124.05  
CLNC DEL 128.1  
CPDLC  
GND CON  
118.575 (Rwys 8L/R, 26L/R, 9/27)  
121.7 (Rwys 15L/R, 33L/R)  
HOUSTON TOWER  
120.725 290.2 (Rwys 8L/26R)  
125.35 290.2 (Rwys 8R/26L)  
127.3 288.25 (Rwys 15L/R, 33L/R)  
135.15 290.2 (Rwys 9/27)  
HOUSTON DEP CON  
127.125 269.075

TOP ALTITUDE:  
16000



TAKEOFF MINIMUMS  
Rwys 8L/R, 9, 15L/R, 26L/R,  
27, 33L/R Standard.

NOTE: Chart not to scale.

**DEPARTURE ROUTE DESCRIPTION**

Climb on assigned heading for RADAR vectors to WEDRI INT, maintain 16000.  
Expect filed altitude 10 minutes after departure, thence. . . .

. . . .on IAH R-082 to HOURN INT, then on LCH R-253 to LCH VORTAC.

FIGHTING TIGERS TRANSITION (LCH5.LSU): From over LCH VORTAC on LCH R-070 and LSU R-252 to LSU VORTAC.