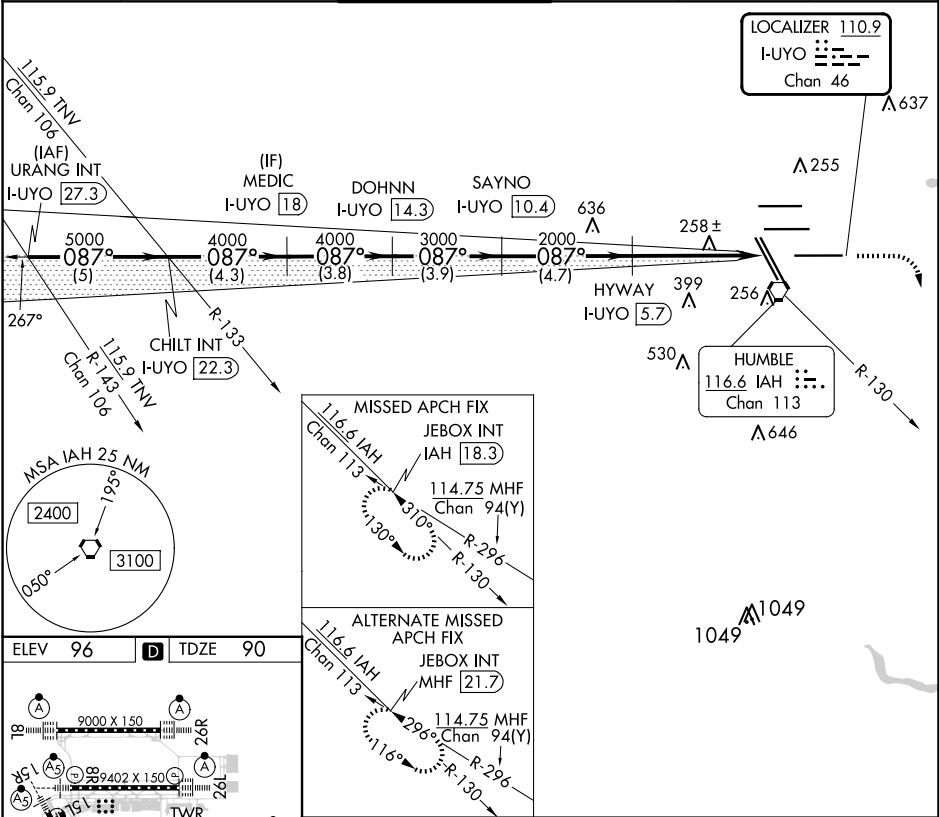


LOC/DME I-UYO <b>110.9</b> Chan <b>46</b>	APP CRS <b>087°</b>	Rwy Idg <b>10000</b> TDZE <b>90</b> Apt Elev <b>96</b>
-------------------------------------------------	------------------------	--------------------------------------------------------------

ILS or LOC RWY 9  
GEORGE BUSH INTCNL/HOUSTON (IAH)

DME required. RADAR required for procedure entry. Simultaneous approach authorized with Rwy 8L/R. # RVR 1800 authorized with the use of FD or AP or HUD to DA.			MALSR 	MISSED APPROACH: Climb to 580 then climbing right turn to 3000 on IAH VORTAC R-130 to JEBX/IAH 18.3 DME and hold.	
D-ATIS <b>124.05</b>	HOUSTON APP CON <b>120.05 379.1</b> EAST <b>124.35 316.15</b> WEST	HOUSTON TOWER <b>135.15 290.2</b>	GND CON <b>118.575</b>	CLNC DEL <b>128.1</b>	CPDLC



ELEV <b>96</b>	<b>D</b>	TDZE <b>90</b>
TDZ/CL Rwy 8s, 8L, 15R, 26R, 26L, 27 and 33L HIRL all Rwy		
FAF to MAP 5.8 NM		
Knots	60	90 120 150 180
Min:Sec	5:48	3:52 2:54 2:19 1:56

URANG INT I-UYO 27.3	CHILT INT I-UYO 22.3	MEDIC I-UYO 18	DOHNN I-UYO 14.3	SAYNO I-UYO 10.4	HYWAY I-UYO 5.7	JEBX INT I-UYO 0.2
5000 087°	4000 087°	4000 087°	3000 087°	2000 087°	2000 087°	2000 087°
GS 3.00° TCH 50						
VGS and ILS glidepath not coincident (VGS Angle 3.00/TCH 71).						
5 NM 4.3 NM 3.8 NM 3.9 NM 4.7 NM 4.5 NM 1.3 NM						
CATEGORY	A	B	C	D	E	
S-ILS 9 #	290/24 200 (200-1/2)					
S-LOC 9	580/24 490 (500-1/2) 580/50 490 (500-1)					

SC-5, 07 AUG 2025 to 04 SEP 2025

SC-5, 07 AUG 2025 to 04 SEP 2025