


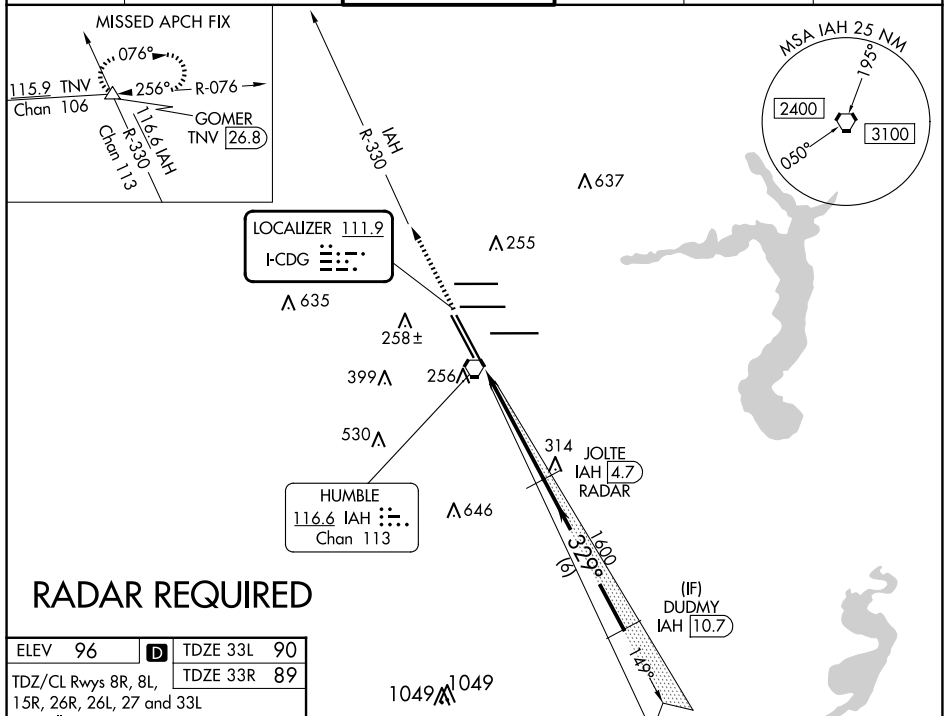
LOC I-CDG <u>111.9</u>	APP CRS 329°	Rwy 33R Idg 12001 TDZE 89 Apt Elev 96	Rwy 33L Idg 10000 TDZE 90 Apt Elev 96
----------------------------------	------------------------	--	--

ILS or LOC RWY 33R

GEORGE BUSH INTCNL/HOUSTON (IAH)

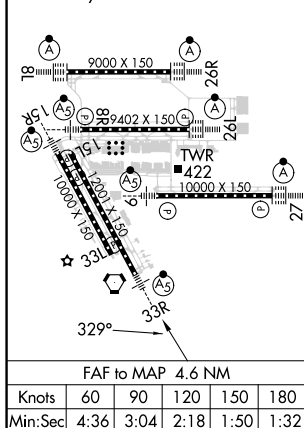
<p>T DME from IAH VORTAC. Simultaneous reception of I-CDG and IAH DME Required. For inop MALSR, increase S-ILS 33R Cat E visibility to RVR 4000 and S-LOC 33R Cat E visibility to 1½ mile. DME or RADAR Required. #RVR 1800 authorized with the use of ED or AP or HUD to DA.</p>	<p>MALSR</p> 	<p>MISSED APPROACH: Climb to 2000 on IAH VORTAC R-330 to GOMER INT/TNV 26.8 DME and hold.</p>
--	---	--

D-ATIS 124.05	HOUSTON APP CON 120.05 379.1 EAST 124.35 316.15 WEST	HOUSTON TOWER 127.3 288.25	GND CON 121.7	CLNC DEL 128.1	CPDLC
-------------------------	--	--------------------------------------	-------------------------	--------------------------	-------



RADAR REQUIRED

ELEV 96	D	TDZE 33L 90
TDZ/CL Rwy's 8R, 8L, 15R, 26R, 26L, 27 and 33L HIRL all Rwy's		TDZE 33R 89



2000 ↑ IAH R-330 *LOC only.	GOMER △				
		JOLTE IAH 4.7 RADAR		DUDMY IAH 10.7	
		1600		2000	
		329°		GS 3.00° TCH 49'	
		1.3 NM		3.3 NM	
		6 NM			
CATEGORY	A	B	C	D	E
S-ILS 33R	# 289/24 200 (200-½)				
S-LOC 33R	540/24 451 (500-½)	540/45 451 (500-¾)			
SIDESTEP Rwy 33L	540-1 450 (500-1)	540-1½ 450 (500-1½)	540-2 450 (500-2)	NA	