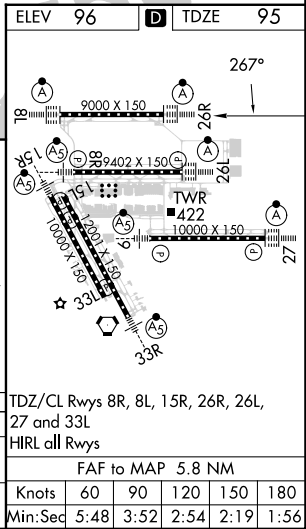
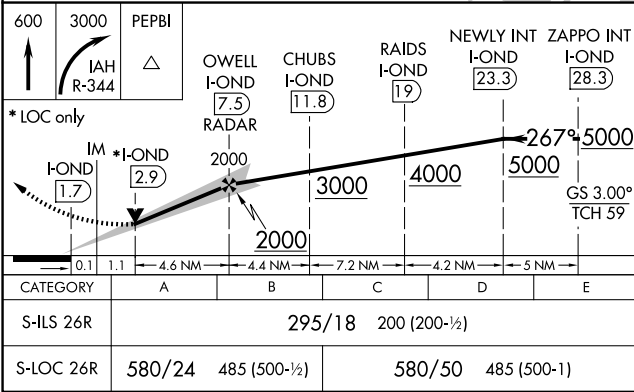
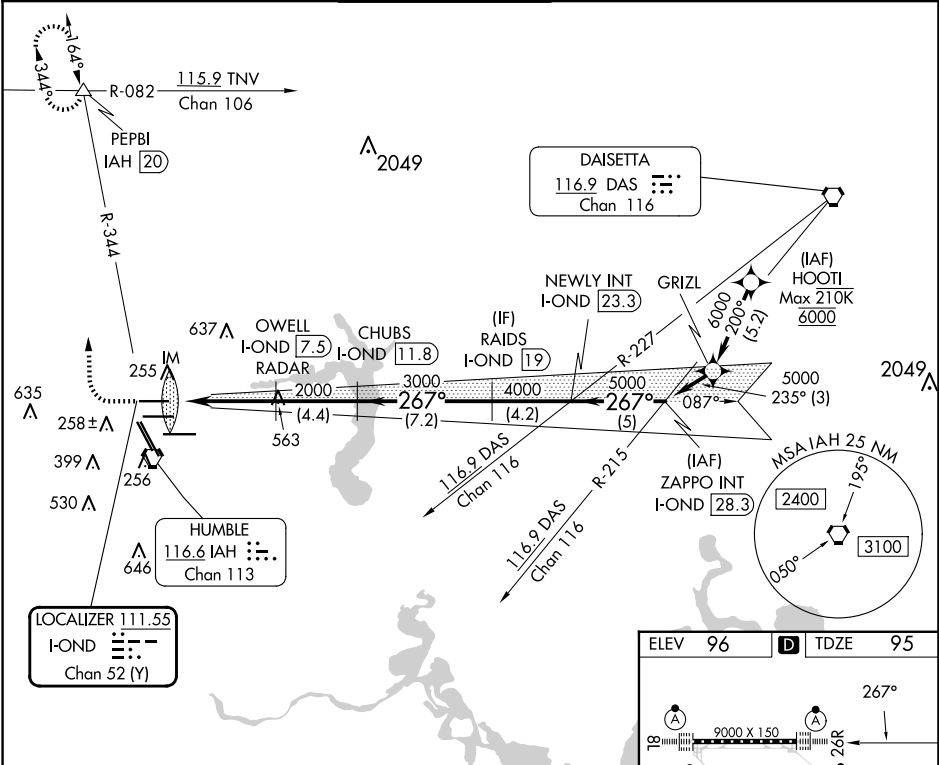


LOC/DME I-OND	APP CRS	Rwy Idg	9000
111.55	267°	TDZE	95
Chan 52 (Y)		Apt Elev	96

ILS or LOC RWY 26R  
GEORGE BUSH INTCNL/HOUSTON (IAH)

DME required. From HOOTI: RNAV 1-GPS required.			ALSIF-2	MISSED APPROACH: Climb to 600 then climbing right turn to 3000 on IAH VORTAC R-344 to PEPBI INT/IAH 20 DME and hold.	
Simultaneous approach authorized with Rwy 26L and Rwy 27. For inop ALS, increase S-ILS 26R Cat E visibility to RVR 4000, and S-LOC 26R Cat C/D/E visibility to 1 3/8 SM.					
D-ATIS	HOUSTON APP CON	HOUSTON TOWER	GND CON	CLNC DEL	CPDLC
124.05	120.05 379.1 EAST 124.35 316.15 WEST	120.725 290.2	118.575	128.1	



SC-5, 07 AUG 2025 to 04 SEP 2025

SC-5, 07 AUG 2025 to 04 SEP 2025