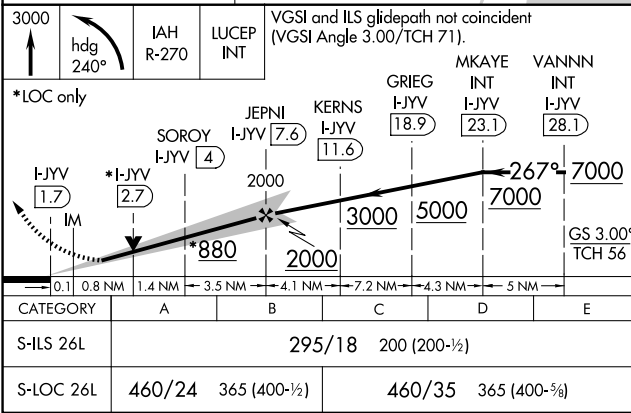
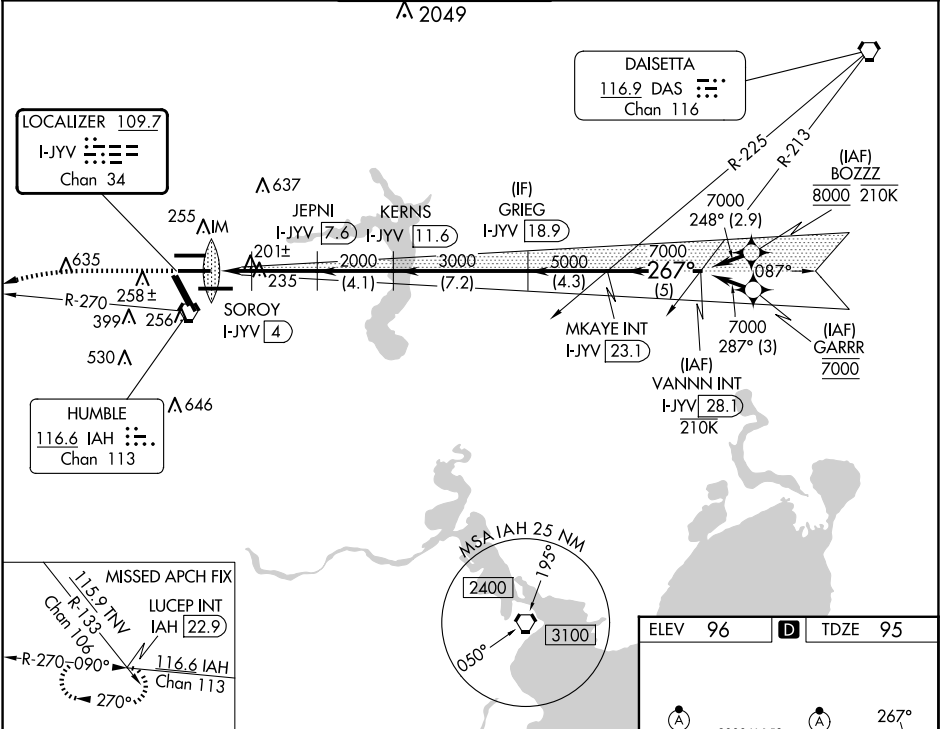


LOC/DME I-JYV	APP CRS	Rwy Idg	9402
109.7	267°	TDZE	95
Chan 34		Apt Elev	96

ILS or LOC RWY 26L
GEORGE BUSH INTCNL/HOUSTON (IAH)

DME required. From BOZZZ, GARRR: RNAV 1-GPS required.	ALSIF-2	MISSED APPROACH: Climb to 3000 then left turn heading 240° and IAH VORTAC R-270 to LUCEP INT/IAH 22.9 DME and hold.
Simultaneous approach authorized with Rwy 26R and Rwy 27. For inop ALS, increase S-ILS 26L Cat E visibility to RVR 4000, S-LOC 26L Cat C/D/E visibility to RVR 5000.		

D-ATIS	HOUSTON APP CON	HOUSTON TOWER	GND CON	CLNC DEL	CPDLC
124.05	120.05 379.1 EAST 124.35 316.15 WEST	125.35 290.2	118.575	128.1	



ELEV 96	TDZE 95
TWR 422	
GS 3.00° TCH 56	
TDZ/CL Wrys 8R, 8L, 15R, 26R, 26L, 27 and 33L	
HIRL all Wrys	
FAF to MAP 5.8 NM	
Knots	60 90 120 150 180
Min:Sec	5:48 3:52 2:54 2:19 1:56

SC-5, 07 AUG 2025 to 04 SEP 2025

SC-5, 07 AUG 2025 to 04 SEP 2025