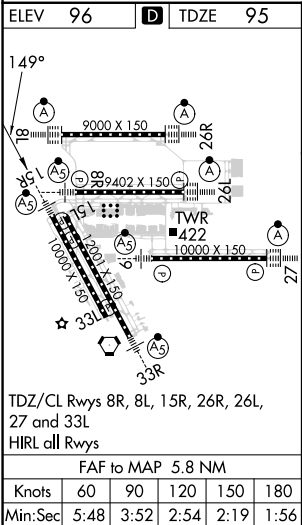
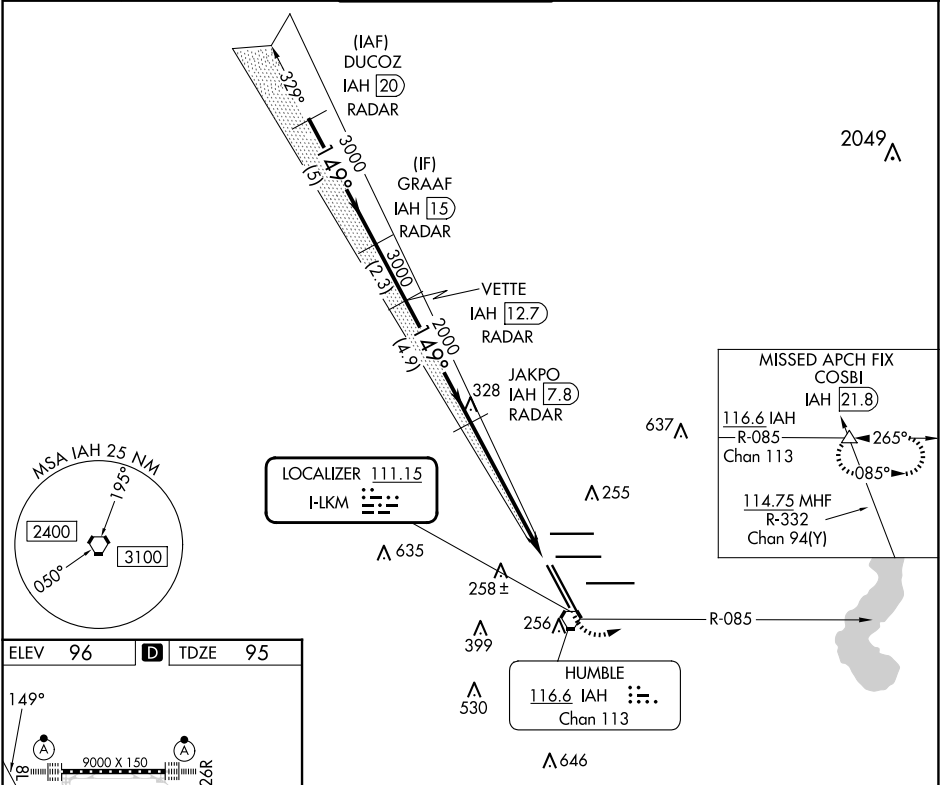


LOC I-LKM	APP CRS	Rwy Idg
111.15	149°	10000
		TDZE
		95
		Apt Elev
		96

ILS or LOC RWY 15R
GEORGE BUSH INTCNL/HOUSTON (IAH)

RADAR required for procedure entry. DME or RADAR required.		MALSR	MISSED APPROACH: Climb to 1000 then climbing left turn to 2000 on IAH VORTAC R-085 to COSBI INT/IAH 21.8 DME and hold.
DME from IAH VORTAC. Simultaneous reception of I-LKM and IAH DME required. For inop ALS, increase S-ILS 15R Cat E visibility to RVR 4000, and S-LOC 15R Cat C/D/E visibility to 1 3/8 SM.			

D-ATIS	HOUSTON APP CON	HOUSTON TOWER	GND CON	CLNC DEL	CPDLC
124.05	120.05 379.1 EAST 124.35 316.15 WEST	127.3 288.25	121.7	128.1	



VGSi and ILS glidepath not coincident (VGSi Angle 3.00/TCH 71).					
DUCOZ IAH [20] RADAR	GRAAF IAH [15] RADAR	VETTE IAH [12.7] RADAR	JAKPO IAH [7.8] RADAR	1000	2000
3000	3000	3000	2000	IAH R-085	COSBI
GS 3.00° TCH 54	149°	149°	2000	* IAH 3.3	IAH 2
* LOC only.					
CATEGORY	A	B	C	D	E
S-ILS 15R	295/18 200 (200-1/2)				
S-LOC 15R	580/24	485 (500-1/2)	580/50	485 (500-1)	